



**BUREAU
VERITAS**

FACILITY CONDITION ASSESSMENT

prepared for

Montgomery County Public Schools
45 West Gude Drive, Suite 4000
Rockville, MD 20850



Rockville High School
2100 Baltimore Road
Rockville, MD 20851

PREPARED BY:

Bureau Veritas
6021 University Boulevard, Suite 200
Ellicott City, MD 21043
800.733.0660
www.bvna.com

BV CONTACT:

Bill Champion
Senior Program Manager
443.622.5067
Bill.Champion@bureauveritas.com

BV PROJECT #:

172559.25R000-195.354

DATE OF REPORT:

May 28, 2026

ON SITE DATE:

February 9-11, 2026

Bureau Veritas

6021 University Boulevard, Suite 200 | Ellicott City, MD 21043 | www.bvna.com | p 800.733.0660

TABLE OF CONTENTS

1. Executive Summary	1
Property Overview and Assessment Details	1
Campus Findings and Deficiencies	2
Facility Characteristic Survey	4
Facility Condition Index (FCI) Depleted Value	5
Immediate Needs.....	5
Key Findings.....	6
Plan Types.....	8
2. Main Building	9
3. Site Summary	12
4. ADA Accessibility	14
5. Purpose and Scope	15
6. Opinions of Probable Costs	17
Methodology	17
Definitions	18
7. Certification	19
8. Appendices	20



1. Executive Summary

Property Overview and Assessment Details

General Information	
Property Type	High school campus
Number of Buildings	1
Main Address	2100 Baltimore Road, Rockville, MD 20851
Site Developed	1968 Renovated 2004
Outside Occupants / Leased Spaces	None
Date(s) of Visit	February 9-11, 2026
Management Point of Contact	Montgomery County Public Schools Mr. Greg Kellner Facilities Manager, Office of Facilities Management Direct 240.740.7746 Gregory_Kellner@mcpsmd.org
On-site Point of Contact (POC)	Victor Bhandari
Assessment & Report Prepared By	Paul Guichet
Reviewed By	James Bryant, Technical Report Reviewer for Bill Champion Program Manager 443.622.5067 Bill.Champion@bureauveritas.com
AssetCalc Link	Full dataset for this assessment can be found at: https://www.assetcalc.net/

Campus Findings and Deficiencies

Historical Summary

Rockville High School was founded in 1968 on approximately 29.61 acres of suburban land in Rockville, MD. The school is fed by Earle B Wood Middle School as well as five elementary schools. Programs provide potential college credit and offer career driven programs and internship opportunities. School athletic programs are also highly competitive. In the early 2000's it became necessary to expand school facilities and an addition was planned. This expansion took place during the 2002-2003 and 2004-2005 school years. During the renovations Rockville High students attended Northwood High School. Since completion of the addition and renovations enrollment has been raised to approximately 1,500 students.

Architectural

The school's main building reflects modern architectural principles through its unadorned masonry structure, brick façade, and flat roofs protected by built-up roofing systems. Exterior architectural detail is added through the use of metal cladding and use of glazing, as well as geometric shapes used to create visual points of interest. The building's interior spaces use hallways and public areas to add visual interest with the use of distinctive building materials such as curved metal ceilings and stained concrete flooring. Common areas are vast, open and unite building additions.

The condition of the building's exterior envelope appears to be without noticeable defect and systems are functioning as intended. The building's interiors have a clean and crisp appearance without signs of any deferred maintenance. Interiors consist of mostly institutional finishes including vinyl composite tile flooring, suspended acoustic tile ceilings, and painted sheetrock and CMU walls. Attentive maintenance provides an atmosphere conducive to a productive learning environment.

Mechanical, Electrical, Plumbing and Fire (MEPF)

The main components of the building's central HVAC system are a cooling tower, chillers, boilers feeding a 4-pipe hydronic system, with air handlers, VAVs. Utility areas are supplemented by suspended unit heaters. Most HVAC components are dated to the renovation of the school and will need replacement over the coming years. The campus is connected to the local municipal water and sewer system, while distribution is through copper supply lines and PVC waste and venting. Plumbing fixtures are without issue, appear to be well attended to, and are clean in appearance. Power and natural gas are provided by the local utility company. Electric power is supplemented with a solar system and is supplied through a main switchboard and dispersed via copper wiring. A natural gas-powered generator coupled with an automatic transfer switch provides emergency power for the building. Interior lighting has been recently upgraded to LED. Fire detection and notification systems are monitored via a central alarm panel and emergency exit signage is provided. Building-wide fire suppression system is present and regular testing is employed.

Site

The site offers a functional, well-developed campus. Monument signage marks the school's entrance. While landscaping is limited, it is well placed and provides a welcoming entrance. Primary access is via an asphalt driveway leading to a primary parking lot at the front of the school, secondary parking along the right side of the school, with a drop-off area, and additional parking to the rear. Concrete curbing encircles parking areas and concrete sidewalks provide access routes to building entrances. Kitchen and utility services are well arranged and screened to the rear of the school. Campus hardscaping is in good functional condition, with limited areas needing attention.

Pole-mounted lighting illuminates parking areas, while building-mounted fixtures provide additional pedestrian lighting. Moderate slopes, present on site perimeters and to the southwest of the main building. These areas are managed using CMU retaining walls. An interior courtyard offers outdoor space, conducive to class meetings or student gatherings. Site furnishings, including park benches, picnic tables, and trash receptacles are provided. To the rear and left of the school are recreational spaces, including a football stadium, baseball field, track, basketball and tennis courts. These areas are well lit and secured within chain link fencing. Multiple storage sheds are dispersed throughout the campus and conveniently address storage needs, and a restroom and snack bar are provided for the football stadium.

Recommended Additional Studies

No additional studies recommended at this time.

Facility Characteristic Survey

The facility characteristics of school and associated buildings are shown below.

Indoor air quality, including temperature and relative humidity level are monitored centrally. Most instructional spaces are equipped with IAQ sensors. Each general and specialty classroom has a heating, ventilation, and air conditioning (HVAC) system capable of maintaining a temperature between 68°F and 75°F and a relative humidity between 30% and 60% at full occupancy. Each general, science, and fine-arts classroom had an HVAC system that continuously moves air and is capable of maintaining a carbon dioxide level of not more than 1,200 parts per million. The temperature, relative humidity and air quality were measured at a work surface in the approximate center of the classroom.

The acoustics with the exception of physical-education spaces, each general and specialty classroom are maintainable at a sustained background sound level of less than 55 decibels. The sound levels were measured at a work surface in the approximate center of the classroom.

Each general and specialty classroom had a lighting system capable of maintaining at least 50 foot-candles of well-distributed light. The school has appropriate task lighting in specialty classrooms where enhanced visibility is required. The light levels measured at a work surface located in the approximate center of the classroom, between clean light fixtures. The school makes efficient use of natural light for students, teachers, and energy conservation.

Classroom spaces, including those for physical education, were sufficient for educational programs that are appropriate for the class-level needs. With the exception of physical-education spaces, each general and specialty classroom contained a work surface and

seat for each student in the classroom. The work surface and seat were appropriate for the normal activity of the class conducted in the room.

Each general and specialty classroom had an erasable surface and a surface suitable for projection purposes, appropriate for group classroom instruction, and a display surface.

Each general and specialty classroom had storage for classroom materials or access to conveniently located storage.

With the exception of physical-education spaces and music-education spaces, each general and specialty classroom shall have a work surface and seat for the teacher and for any aide assigned to the classroom. The classroom had secure storage for student records that is located in the classroom or is conveniently accessible to the classroom.

The school was constructed with sustainable design practices. The schools use durable, timeless, low-maintenance exterior materials. The school's materials (particularly shell) should withstand time as well as potential impacts related to structural, site and climate changes.

The school is functionally equitable. All students in this school have access to safe, well-maintained, and appropriately equipped learning environments as students in other MCPS schools. As part of the evaluation factor, the MDCI will be presented upon final of all assessments.

Facility Condition Index (FCI) Depleted Value

A School Facility’s total FCI Depleted Value (below) and FCI Replacement Value (above) are the sum of all of its building assets and systems values. A School Facility with full estimated life of all systems (a brand new school) would have a 0 FCI. The FCIs cannot exceed 1.

The Facility Condition Index (FCI) Depleted Value quantifies the depleted life and value of a facility’s primary building assets, systems and components such as roofs, windows, walls, and HVAC systems. FCI Depleted Value metrics are useful for estimating the levels of spending necessary to achieve and maintain a specific level of physical condition. Lower scores are better, as facilities with lower FCI scores have fewer building-system deficiencies, are more reliable, and will require less maintenance spending on systems replacement and mission-critical emergencies.

The FCI Depleted Value of this school is 0.508048.

Immediate Needs

Facility/Building	Total Items	Total Cost
Rockville High School	2	\$18,900
Total	2	\$18,900

Rockville High School

ID	Location	Location Description	UF Code	Description	Condition	Plan Type	Cost
10304619	Rockville High School / Main Building	2nd Floor Gymnasium	C1010	Movable Partition, Gym Divider, Deluxe/Operable, Replace	Failed	Performance/Integrity	\$17,800
10304542	Rockville High School / Site	Site Parking Areas	G2020	Parking Lots, Pavement, Asphalt, Cut & Patch	Failed	Performance/Integrity	\$1,100
Total (2 items)							\$18,900



Key Findings



Cooling Tower in Poor condition.

(Typical) Open Circuit , 101 to 200 TON
Main Building Rockville High School Chiller
Corral

Uniformat Code: D3030
Recommendation: **Replace in 2027**

Priority Score: **85.8**

Plan Type:
Performance/Integrity

Cost Estimate: \$77,900

\$\$\$\$

Reported to be in poor condition. Service work being done during assessment. - AssetCALC ID: 10302297



Parking Lots in Failed condition.

Pavement, Asphalt
Site Rockville High School Site Parking Areas

Uniformat Code: G2020
Recommendation: **Cut and Patch in 2025**

Priority Score: **84.9**

Plan Type:
Performance/Integrity

Cost Estimate: \$1,100

\$\$\$\$

Replace damaged and failing asphalt. - AssetCALC ID: 10304542



Interior Construction in Failed condition.

any type, Repairs per Man-Day
Main Building Rockville High School 2nd Floor
Gymnasium

Uniformat Code: C1010
Recommendation: **Repair in 2026**

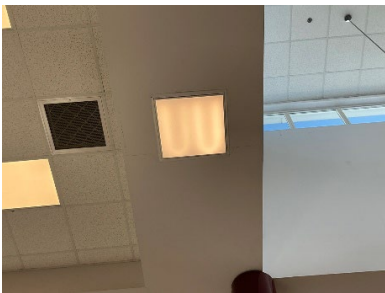
Priority Score: **84.9**

Plan Type:
Performance/Integrity

Cost Estimate: \$5,500

\$\$\$\$

Wrap 900 Square Foot center section with plywood to prevent repeated damage from basketballs. - AssetCALC ID: 10304679



Interior Wall in Poor condition.

Gypsum Board/Plaster
Main Building Rockville High School 1054 -
Cafeteria

Uniformat Code: C1010
Recommendation: **Replace in 2027**

Priority Score: **84.8**

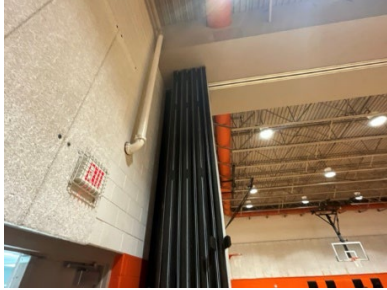
Plan Type:
Performance/Integrity

Cost Estimate: \$14,000

\$\$\$\$

Cracking throughout - AssetCALC ID: 10302347





Movable Partition in Failed condition.

Gym Divider, Deluxe/Operable
Main Building Rockville High School 2nd Floor
Gymnasium

Uniformat Code: C1010
Recommendation: **Replace in 2025**

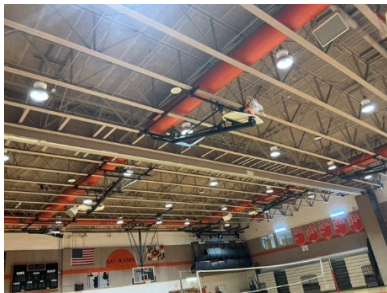
Priority Score: **82.9**

Plan Type:
Performance/Integrity

Cost Estimate: \$17,800

\$\$\$\$

Inoperable - AssetCALC ID: 10304619



Movable Partition in Poor condition.

Gym Divider, Deluxe/Operable
Main Building Rockville High School 1097 -
Gymnasium

Uniformat Code: C1010
Recommendation: **Replace in 2027**

Priority Score: **82.8**

Plan Type:
Performance/Integrity

Cost Estimate: \$89,200

\$\$\$\$

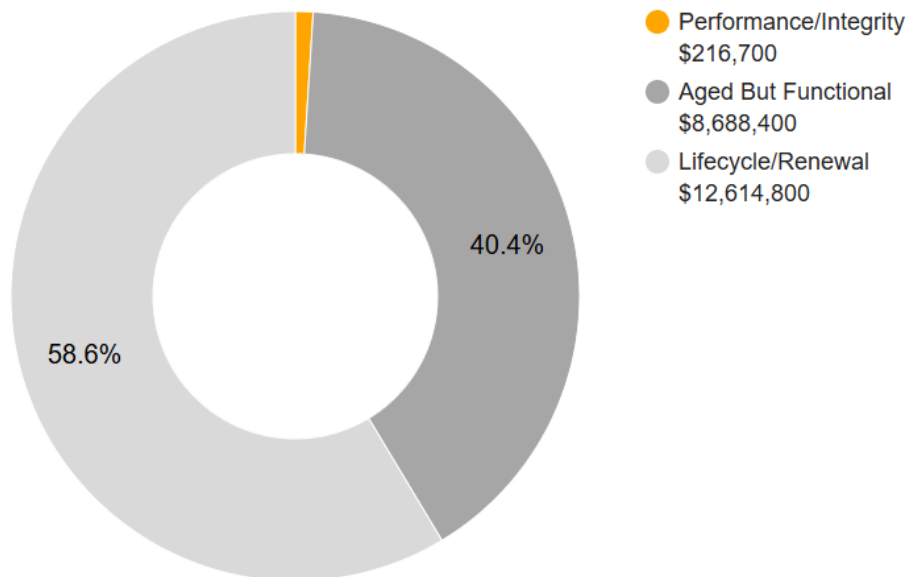
Gym divider bowing in the middle - scratching floor - AssetCALC ID: 10302321

Plan Types

Each line item in the cost database is assigned a Plan Type, which is the primary reason or rationale for the recommended replacement, repair, or other corrective action. This is the “why” part of the equation. A cost or line item may commonly have more than one applicable Plan Type; however, only one Plan Type will be assigned based on the “best” fit, typically the one with the greatest significance and highest on the list below.

Plan Type Descriptions and Distribution

Safety	■	An observed or reported unsafe condition that if left unaddressed could result in injury; a system or component that presents potential liability risk.
Performance/Integrity	■	Component or system has failed, is almost failing, performs unreliably, does not perform as intended, and/or poses risk to overall system stability.
Accessibility	■	Does not meet ADA, UFAS, and/or other accessibility requirements.
Environmental	■	Improvements to air or water quality, including removal of hazardous materials from the building or site.
Retrofit/Adaptation	■	Components, systems, or spaces recommended for upgrades in in order to meet current standards, facility usage, or client/occupant needs.
Aged But Functional	■	Any component or system that has aged past its industry-average expected useful life (EUL) but is not currently deficient or problematic.
Lifecycle/Renewal	■	Any component or system that is neither deficient nor aged past EUL but for which future replacement or repair is anticipated and budgeted.



10-YEAR TOTAL: \$21,519,900



2. Main Building



Main Building: Systems Summary

Address	2100 Baltimore Road, Rockville, MD 20851	
GPS Coordinates	39° 5.208'N, 77° 7.109'W	
Constructed/Renovated	1968/2004	
Building Area	317,731 SF	
Number of Stories	Three above grade	
<i>System</i>	<i>Description</i>	<i>Condition</i>
Structure	Steel frame with concrete-topped metal decks over concrete pad column footings	Fair
Façade	Primary Wall Finish: Brick Secondary Wall Finish: Metal siding Windows: Aluminum	Fair
Roof	Primary: Flat construction with built-up finish	Good
Interiors	Walls: Painted gypsum board and CMU, ceramic tile Floors: Carpet, VCT, ceramic tile, quarry tile, wood strip, rubber tile, unfinished concrete Ceilings: Painted gypsum board, painted irregular, ACT, Unfinished/exposed	Fair
Elevators	Passenger: hydraulic cars serving all three floors	Fair



Main Building: Systems Summary		
Plumbing	Distribution: Copper supply and PVC waste and venting Hot Water: Gas and Electric water heaters with integral tanks Fixtures: Toilets, urinals, and sinks in restrooms	Fair
HVAC	Central System: Boilers, chillers, air handlers, and cooling tower feeding VAVs Supplemental components: Split-system heat pumps, Suspended unit heaters	Fair
Fire Suppression	Wet-pipe sprinkler system and fire extinguishers, kitchen hood system, dedicated computer/server room chemical system	Fair
Electrical	Source & Distribution: Main switchboard with copper wiring Interior Lighting: LED Exterior Building-Mounted Lighting: LED, metal halide Emergency Power: Natural gas generator with automatic transfer switch	Fair
Fire Alarm	Alarm panel with smoke detectors, alarms, strobes, pull stations, and exit signs	Fair
Equipment/Special	Commercial kitchen equipment	Fair
Accessibility	Presently it does not appear an accessibility study is needed for this building. See the appendix for associated photos and additional information.	
Additional Studies	No additional studies are currently recommended for the building.	
Areas Observed	Most of the interior spaces were observed to gain a clear understanding of the facility's overall condition. Other areas accessed and assessed included the exterior equipment and assets directly serving the building, the exterior walls of the facility, and the roofs.	
Key Spaces Not Observed	All key areas of the facility were accessible and observed.	

The table below shows the anticipated costs by trade or building system over the next 20 years.

System Expenditure Forecast						
System	Immediate	Short Term (1-2 yr)	Near Term (3-5 yr)	Med Term (6-10 yr)	Long Term (11-20 yr)	TOTAL
Structure	-	-	-	\$219,200	-	\$219,200
Facade	-	-	-	\$377,300	\$327,200	\$704,500
Roofing	-	-	-	\$3,500	\$3,897,300	\$3,900,800
Interiors	\$17,800	\$115,100	\$184,700	\$3,294,400	\$6,311,100	\$9,923,200
Conveying	-	-	\$3,500	\$73,900	\$4,700	\$82,100
Plumbing	-	-	\$50,000	\$424,100	\$3,063,300	\$3,537,400
HVAC	-	\$82,600	\$1,210,700	\$4,442,000	\$4,457,100	\$10,192,500
Fire Protection	-	-	-	\$457,700	\$30,700	\$488,400
Electrical	-	-	\$1,906,500	\$710,800	\$2,949,900	\$5,567,200
Fire Alarm & Electronic Systems	-	-	\$950,800	\$2,712,800	\$1,460,900	\$5,124,500
Equipment & Furnishings	-	\$3,400	\$965,200	\$1,424,200	\$292,400	\$2,685,300
Site Development	-	-	\$14,700	\$3,800	\$8,500	\$27,000
Site Utilities	-	-	\$7,900	-	-	\$7,900
TOTALS (3% inflation)	\$17,800	\$201,200	\$5,294,000	\$14,143,700	\$22,803,200	\$42,459,900

3. Site Summary



Site Information		
Site Area	29.61 acres (estimated)	
Parking Spaces	334 total spaces all in open lots; 10 of which are accessible	
<i>System</i>	<i>Description</i>	<i>Condition</i>
Site Pavement	Asphalt lots with limited areas of concrete aprons and adjacent concrete sidewalks, curbs, ramps, and stairs	Fair
Site Development	Property entrance signage; chain link fencing; Playgrounds and sports fields and courts with bleachers, dugouts, press box, fencing, and site lights Heavily furnished with park benches, picnic tables, trash receptacles	Fair
Landscaping & Topography	Limited landscaping features including lawns, trees, bushes, and planters Irrigation present CMU retaining walls Low to moderate site slopes throughout, Severe site slopes along the southwest of the school and along boundaries	Fair
Utilities	Municipal water and sewer, Local utility-provided electric and natural gas, with solar	Fair
Site Lighting	Pole-mounted: metal halide Pedestrian walkway and landscape accent lighting	Fair

Site Information		
Ancillary Structures	Storage sheds	Fair
Site Accessibility	Presently it does not appear an accessibility study is needed for the exterior site areas. See the appendix for associated photos and additional information.	
Site Additional Studies	No additional studies are currently recommended for the exterior site areas.	
Site Areas Observed	Most of the exterior areas within the property boundaries were observed to gain a clear understanding of the site's overall condition.	
Site Key Spaces Not Observed	All key areas of the exterior site were accessible and observed.	

The table below shows the anticipated costs by trade or site system over the next 20 years.

System Expenditure Forecast						
System	Immediate	Short Term (1-2 yr)	Near Term (3-5 yr)	Med Term (6-10 yr)	Long Term (11-20 yr)	TOTAL
Plumbing	-	-	\$1,000	-	\$1,500	\$2,500
HVAC	-	-	-	\$4,300	-	\$4,300
Electrical	-	-	-	\$51,300	-	\$51,300
Equipment & Furnishings	-	-	\$34,800	\$334,700	-	\$369,500
Special Construction & Demo	-	-	-	\$62,700	\$269,500	\$332,200
Site Development	-	-	\$12,600	\$336,500	\$1,233,800	\$1,582,900
Site Utilities	-	-	-	-	\$224,000	\$224,000
Site Pavement	\$1,100	-	\$92,100	\$932,300	\$267,200	\$1,292,700
TOTALS (3% inflation)	\$1,100	-	\$140,400	\$1,721,800	\$1,996,000	\$3,859,300

4. ADA Accessibility

Removal of barriers to accessibility should be addressed from a liability standpoint in order to comply with federal law, but the barriers may or may not be building code violations. The Americans with Disabilities Act Accessibility Guidelines are part of the ADA federal civil rights law pertaining to the disabled and are not a construction code. State and local jurisdictions have adopted the ADA Guidelines or have adopted other standards for accessibility as part of their construction codes.

During the FCA, Bureau Veritas performed a limited high-level accessibility review of the facility non-specific to any local regulations or codes. The scope of the visual observation was limited to the same areas observed while performing the FCA and the categories set forth in the material included in the appendix. It is understood by the Client that the limited observations described herein do not comprise a full ADA Compliance Survey, and that such a survey is beyond the scope of this assessment. A full measured ADA survey would be required to identify more specific potential accessibility issues. Additional clarifications of this limited survey:

- This survey was visual in nature and actual measurements were not taken to verify compliance
- Only a representative sample of areas was observed
- Two overview photos were taken for each subsection regardless of perceived compliance or non-compliance
- Itemized costs for individual non-compliant items are included in the dataset
- For any “none” boxes checked or reference to “no issues” identified, that alone does not guarantee full compliance

During the FCA, Bureau Veritas performed a limited high-level accessibility review of the facility non-specific to any local regulations or codes. The scope of the visual observation was limited to the same areas observed while performing the FCA and the categories set forth in the material included in the appendix. It is understood by the Client that the limited observations described herein do not comprise a full ADA Compliance Survey, and that such a survey is beyond the scope of this assessment. A full measured ADA survey would be required to identify more specific potential accessibility issues. Additional clarifications of this limited survey:

- This survey was visual in nature and actual measurements were not taken to verify compliance
- Only a representative sample of areas was observed
- Two overview photos were taken for each subsection regardless of perceived compliance or non-compliance
- Itemized costs for individual non-compliant items are included in the dataset
- For any “none” boxes checked or reference to “no issues” identified, that alone does not guarantee full compliance

The following table summarizes the accessibility conditions of the general site and each significant building or building group included in this report:

Accessibility Summary			
<i>Facility</i>	<i>Year Built/ Renovated</i>	<i>Prior Study Provided?</i>	<i>Major/Moderate Issues Observed?</i>
General Site	1968/2004	No	No
Main Building	1968/2004	No	No

No detailed follow-up accessibility study is currently recommended since no major or moderate issues were identified on the subject site. Reference the appendix for specific data, photos, and tables or checklists associated with this limited accessibility survey.

5. Purpose and Scope

Purpose

Bureau Veritas was retained by the client to render an opinion as to the Property's current general physical condition on the day of the site visit.

Based on the observations, interviews and document review outlined below, this report identifies significant deferred maintenance issues, existing deficiencies, and material code violations of record, which affect the Property's use. Opinions are rendered as to its structural integrity, building system condition and the Property's overall condition. The report also notes building systems or components that have realized or exceeded their typical expected useful lives.

The physical condition of building systems and related components are typically defined as being in one of five condition ratings. For the purposes of this report, the following definitions are used:

Condition Ratings	
Excellent	New or very close to new; component or system typically has been installed within the past year, sound and performing its function. Eventual repair or replacement will be required when the component or system either reaches the end of its useful life or fails in service.
Good	Satisfactory as-is. Component or system is sound and performing its function, typically within the first third of its lifecycle. However, it may show minor signs of normal wear and tear. Repair or replacement will be required when the component or system either reaches the end of its useful life or fails in service.
Fair	Showing signs of wear and use but still satisfactory as-is, typically near the median of its estimated useful life. Component or system is performing adequately at this time but may exhibit some signs of wear, deferred maintenance, or evidence of previous repairs. Repair or replacement will be required due to the component or system's condition and/or its estimated remaining useful life.
Poor	Component or system is significantly aged, flawed, functioning intermittently or unreliably; displays obvious signs of deferred maintenance; shows evidence of previous repair or workmanship not in compliance with commonly accepted standards; has become obsolete; or exhibits an inherent deficiency. The present condition could contribute to or cause the deterioration of contiguous elements or systems. Either full component replacement is needed, or repairs are required to restore to good condition, prevent premature failure, and/or prolong useful life.
Failed	Component or system has ceased functioning or performing as intended. Replacement, repair, or other significant corrective action is recommended or required.
Not Applicable	Assigning a condition does not apply or make logical sense, most commonly due to the item in question not being present.

Scope

The standard scope of the Facility Condition Assessment includes the following:

- Visit the Property to evaluate the general condition of the building and site improvements, review available construction documents in order to familiarize ourselves with, and be able to comment on, the in-place construction systems, life safety, mechanical, electrical, and plumbing systems, and the general built environment.
- Identify those components that are exhibiting deferred maintenance issues and provide cost estimates for Immediate Costs and Replacement Reserves based on observed conditions, maintenance history and industry standard useful life estimates. This will include a review of documented capital improvements completed within the last five-year period and work currently contracted for, if applicable.
- Provide a full description of the Property with descriptions of in-place systems and commentary on observed conditions.
- Provide a high-level categorical general statement regarding the subject Property's compliance to Title III of the Americans with Disabilities Act. This will not constitute a full ADA survey, but will help identify exposure to issues and the need for further review.
- Obtain background and historical information about the facility from a building engineer, property manager, maintenance staff, or other knowledgeable source. The preferred methodology is to have the client representative or building occupant complete a Pre-Survey Questionnaire (PSQ) in advance of the site visit. Common alternatives include a verbal interview just prior to or during the walk-through portion of the assessment.
- Review maintenance records and procedures with the in-place maintenance personnel.
- Observe a representative sample of the interior spaces/units, including vacant spaces/units, to gain a clear understanding of the property's overall condition. Other areas to be observed include the exterior of the property, the roofs, interior common areas, and the significant mechanical, electrical and elevator equipment rooms.
- Provide recommendations for additional studies, if required, with related budgetary information.
- Provide an Executive Summary at the beginning of this report, which highlights key findings and includes a Facility Condition Index as a basis for comparing the relative conditions of the buildings within the portfolio.

6. Opinions of Probable Costs

Cost estimates are embedded throughout this report, including the detailed Replacement Reserves report in the appendix. The cost estimates are predominantly based on construction rehabilitation costs developed by the *RSMeans data from Gordian*. While the *RSMeans data from Gordian* is the primary reference source for the Bureau Veritas cost library, secondary and supporting sources include but are not limited to other industry experts work, such as *Marshall & Swift* and *CBRE Whitestone*. For improved accuracy, additional research integrated with Bureau Veritas's historical experience with past costs for similar properties, city cost indexes, and assumptions regarding future economic conditions also come into play when deemed necessary. Invoice or bid documents provided either by the owner or facility construction resources may be reviewed early in the process or for specific projects as warranted.

Opinions of probable costs should only be construed as preliminary, order of magnitude budgets. Actual costs most probably will vary from the consultant's opinions of probable costs depending on such matters as type and design of suggested remedy, quality of materials and installation, manufacturer and type of equipment or system selected, field conditions, whether a physical deficiency is repaired or replaced in whole, phasing or bundling of the work (if applicable), quality of contractor, quality of project management exercised, market conditions, use of subcontractors, and whether competitive pricing is solicited, etc. Certain opinions of probable costs cannot be developed within the scope of this guide without further study. Opinions of probable cost for further study should be included in the FCA.

Methodology

Based upon site observations, research, and judgment, along with referencing Expected Useful Life (EUL) tables from various industry sources, Bureau Veritas opines as to when a system or component will most probably necessitate replacement. Accurate historical replacement records, if provided, are typically the best source of information. Exposure to the elements, initial quality and installation, extent of use, the quality and amount of preventive maintenance exercised, etc., are all factors that impact the effective age of a system or component. As a result, a system or component may have an effective age that is greater or less than its actual chronological age. The Remaining Useful Life (RUL) of a component or system equals the EUL less its *effective age*, whether explicitly or implicitly stated. Projections of Remaining Useful Life (RUL) are based primarily on age and condition with the presumption of continued use and maintenance of the Property similar to the observed and reported past use and maintenance practices, in conjunction with the professional judgment of Bureau Veritas's assessors. Significant changes in occupants and/or usage may affect the service life of some systems or components.

Where quantities could not be or were not derived from an actual construction document take-off or facility walk-through, and/or where systemic costs are more applicable or provide more intrinsic value, budgetary square foot and gross square foot costs are used. Estimated costs are based on professional judgment and the probable or actual extent of the observed defect, inclusive of the cost to design, procure, construct and manage the corrections.

To account for differences in prices between locations, the base costs are modified by geographical location factors to adjust for to market conditions, transportation costs, or other local contributors. When requested by the client, the costs may be further adjusted by several additional factors including; labor rates (prevailing minimum wage), general contractor fees for profit and overhead, and insurance. If desired, costs for design and permits, and a contingency factor, may also be included in the calculations.

Definitions

Immediate Needs

Immediate Needs are line items that require immediate action as a result of: (1) material existing or potential unsafe conditions, (2) failed or imminent failure of mission critical building systems or components, or (3) conditions that, if not addressed, have the potential to result in, or contribute to, critical element or system failure within one year or will most probably result in a significant escalation of its remedial cost.

For database and reporting purposes the line items with RUL=0, and commonly associated with *Safety* or *Performance/Integrity* Plan Types, are considered Immediate Needs.

Replacement Reserves

Cost line items traditionally called Replacement Reserves (equivalently referred to as Lifecycle/Renewals) are for recurring probable renewals or expenditures, which are not classified as operation or maintenance expenses. The replacement reserves should be budgeted for in advance on an annual basis. Replacement Reserves are reasonably predictable both in terms of frequency and cost. However, Replacement Reserves may also include components or systems that have an indeterminable life but, nonetheless, have a potential for failure within an estimated time period.

Replacement Reserves generally exclude systems or components that are estimated to expire after the reserve term and are not considered material to the structural and mechanical integrity of the subject property. Furthermore, systems and components that are not deemed to have a material effect on the use of the Property are also excluded. Costs that are caused by acts of God, accidents, or other occurrences that are typically covered by insurance, rather than reserved for, are also excluded.

Replacement costs are solicited from ownership/property management, Bureau Veritas's discussions with service companies, manufacturers' representatives, and previous experience in preparing such schedules for other similar facilities. Costs for work performed by the ownership's or property management's maintenance staff are also considered.

Bureau Veritas's reserve methodology involves identification and quantification of those systems or components requiring capital reserve funds within the assessment period. The assessment period is defined as the effective age plus the reserve term. Additional information concerning system or component replacement costs (in today's dollars), typical expected useful lives, and remaining useful lives were estimated so that a funding schedule could be prepared. The Replacement Reserves Schedule presupposes that all required remedial work has been performed or that monies for remediation have been budgeted for items defined as Immediate Needs.

For the purposes of 'bucketizing' the System Expenditure Forecasts in this report, the Replacement Reserves have been subdivided and grouped as follows: Short Term (years 1-3), Near Term (years 4-5), Medium Term (years 6-10), and Long Term (years 11-20).

Key Findings

In an effort to highlight the most significant cost items and not be overwhelmed by the Replacement Reserves report in its totality, a subsection of Key Findings is included within the Executive Summary section of this report. Key Findings typically include repairs or replacements of deficient items within the first five-year window, as well as the most significant high-dollar line items that fall anywhere within the ten-year term. Note that while there is some subjectivity associated with identifying the Key Findings, the Immediate Needs are always included as a subset.

7. Certification

Montgomery County Public Schools (the Client) retained Bureau Veritas to perform this Facility Condition Assessment in connection with its continued operation of Rockville High School, 2100 Baltimore Road, Rockville, MD 20851, the "Property". It is our understanding that the primary interest of the Client is to locate and evaluate materials and building system defects that might significantly affect the value of the property and to determine if the present Property has conditions that will have a significant impact on its continued operations.

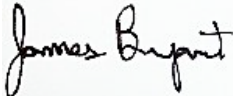
The conclusions and recommendations presented in this report are based on the brief review of the plans and records made available to our Project Manager during the site visit, interviews of available property management personnel and maintenance contractors familiar with the Property, appropriate inquiry of municipal authorities, our Project Manager's walk-through observations during the site visit, and our experience with similar properties.

No testing, exploratory probing, dismantling or operating of equipment or in-depth studies were performed unless specifically required under the *Purpose and Scope* section of this report. This assessment did not include engineering calculations to determine the adequacy of the Property's original design or existing systems. Although walk-through observations were performed, not all areas may have been observed (see Section 1 for specific details). There may be defects in the Property, which were in areas not observed or readily accessible, may not have been visible, or were not disclosed by management personnel when questioned. The report describes property conditions at the time that the observations and research were conducted.

This report has been prepared for and is exclusively for the use and benefit of the Client identified on the cover page of this report. The purpose for which this report shall be used shall be limited to the use as stated in the contract between the client and Bureau Veritas.

This report, or any of the information contained therein, is not for the use or benefit of, nor may it be relied upon by any other person or entity, for any purpose without the advance written consent of Bureau Veritas. Any reuse or distribution without such consent shall be at the client's or recipient's sole risk, without liability to Bureau Veritas.

Prepared by: Paul Guichet
Project Assessor

Reviewed by: 

James Bryant
Technical Report Reviewer for
Bill Champion
Program Manager 443.622.5067
Bill.Champion@bureauveritas.com

8. Appendices

- Appendix A: Photographic Record
- Appendix B: Site Plan(s)
- Appendix C: Pre-Survey Questionnaire(s)
- Appendix D: Accessibility Review and Photos
- Appendix E: Component Condition Report
- Appendix F: Replacement Reserves
- Appendix G: Equipment Inventory List



Appendix A:

Photographic Record

Photographic Overview



1 - FRONT ELEVATION



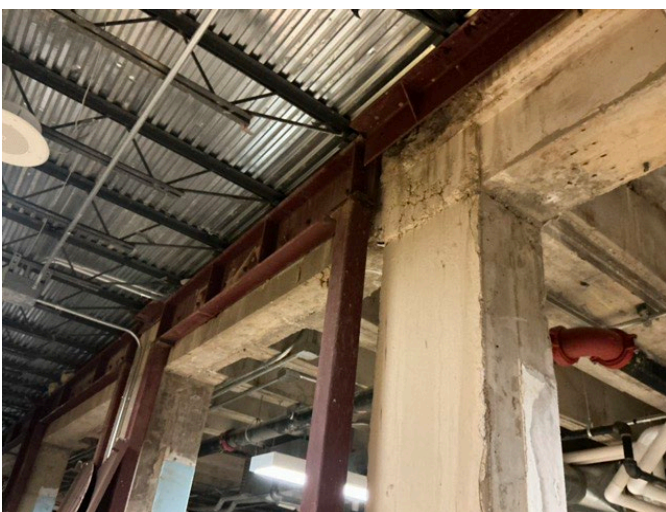
2 - RIGHT ELEVATION



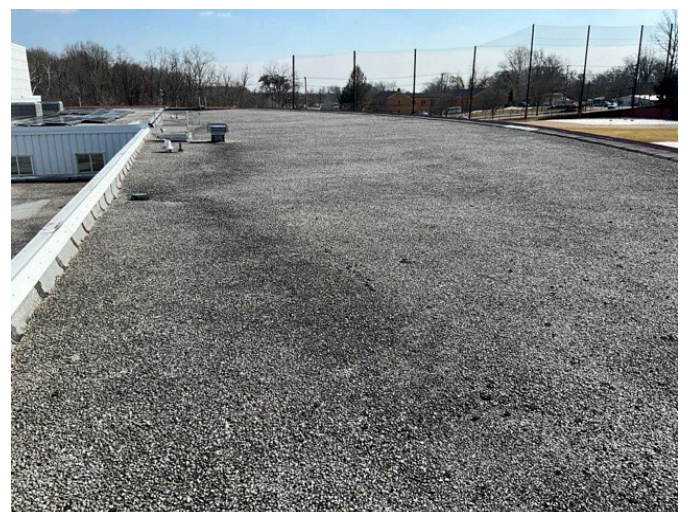
3 - LEFT ELEVATION



4 - REAR ELEVATION



5 - STRUCTURAL



6 - ROOFING

Photographic Overview



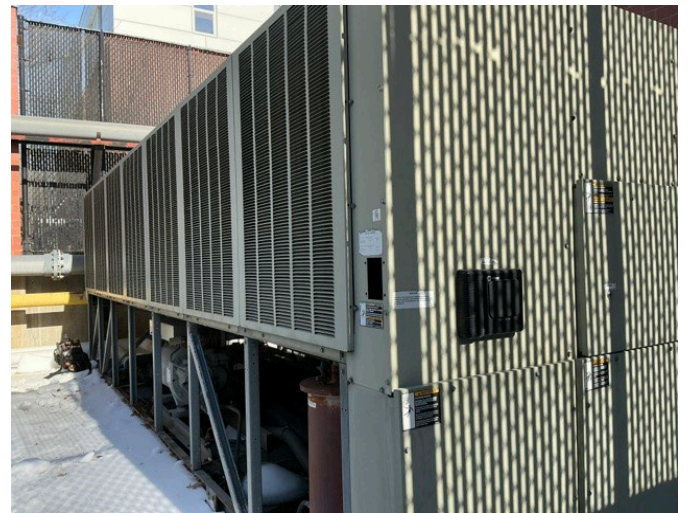
7 - PASSENGER ELEVATOR



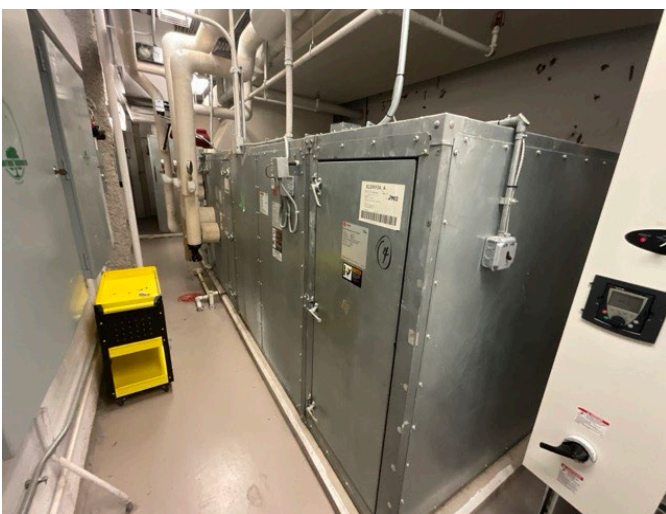
8 - COOLING TOWER



9 - BOILER



10 - CHILLER



11 - AIR HANDLER



12 - WATER HEATERS

Photographic Overview



13 - SOLAR PANELS



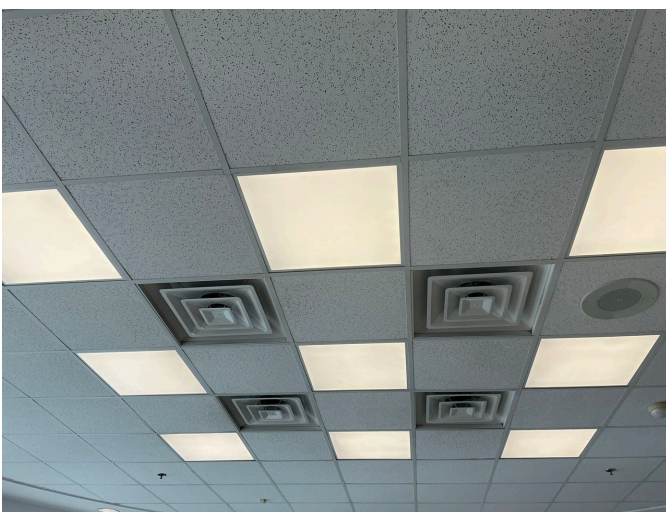
14 - ELECTRICAL ROOM



15 - GENERATOR



16 - AUTOMATIC TRANSFER SWITCH



17 - LIGHTING SYSTEM



18 - EMERGENCY AND EXIT LIGHTING SYSTEM

Photographic Overview



19 - FIRE ALARM SYSTEM



20 - FIRE ALARM PANEL



21 - FIRE SUPPRESSION SYSTEM



22 - FIRE RISER



23 - SECURITY/SURVEILLANCE SYSTEM



24 - INTERCOM/PA SYSTEM

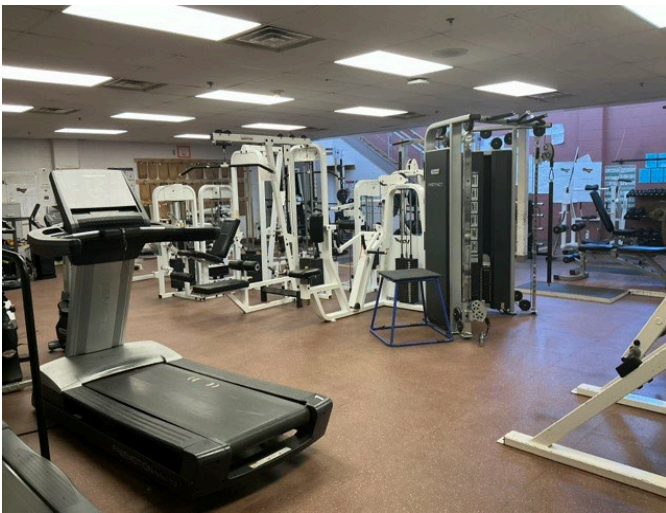
Photographic Overview



25 - LIBRARY



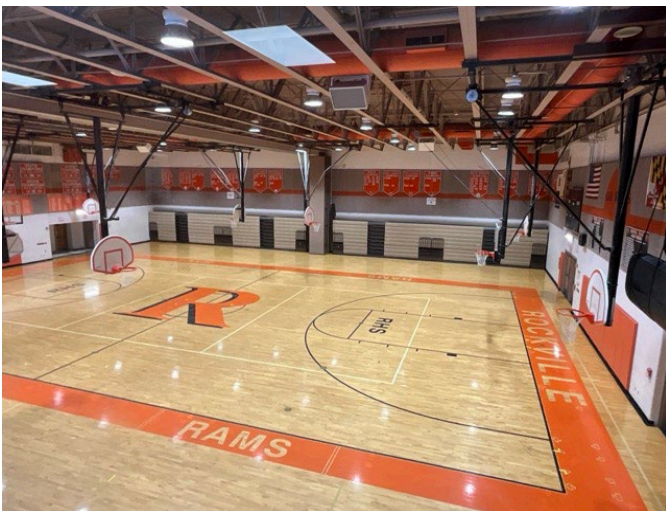
26 - CONFERENCE ROOM



27 - WEIGHT ROOM



28 - AUDITORIUM



29 - GYMNASIUM



30 - CLASSROOM

Photographic Overview



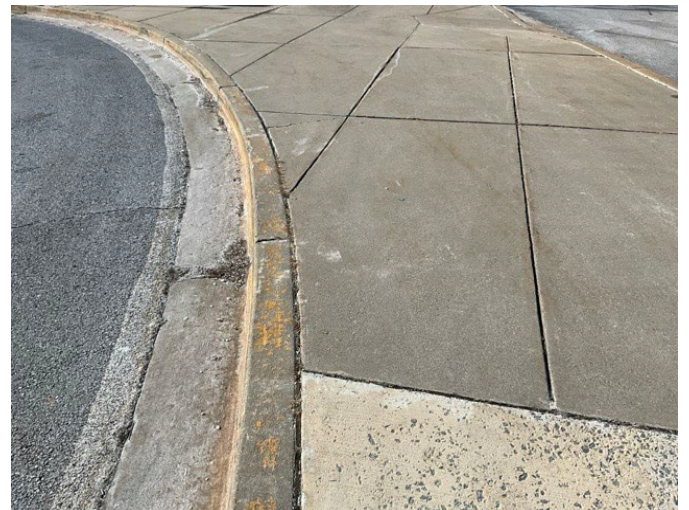
31 - GREENHOUSE OVERVIEW



32 - SIGNAGE



33 - PARKING LOTS



34 - SIDEWALKS AND CURBING



35 - RETAINING WALLS



36 - COURTYARDS



Photographic Overview



37 - FOOTBALL STADIUM



38 - BASEBALL FIELD



39 - BASKETBALL COURT



40 - TENNIS COURTS



41 - FENCES AND GATES



42 - BIKE RACK

Appendix B:

Site Plan(s)

Site Plan



Project Number

172559.25R000-195.354

Source

Google

Site Name

Rockville High School

On-Site Date

February 9-11, 2026



Appendix C:

Pre-Survey Questionnaire(s)

BV FACILITY CONDITION ASSESSMENT: PRE-SURVEY QUESTIONNAIRE

Building / Facility Name: Rockville High School

Name of person completing form: Victor bhandari

Title / Association w/ property: Building service manager -

Length of time associated w/ property: 12 years

Date Completed: 2/9/2026

Phone Number: (240) 740 6603

Method of Completion: INTERVIEW - verbally completed during interview

Directions: Please answer all questions to the best of your knowledge and in good faith. Please provide additional details in the Comments column, or backup documentation for any **Yes** responses.


Data Overview		Response		
1	Year(s) constructed	Constructed 1968	Renovated 2004	2004 - complete gut no adds
2	Building size in SF	SF		
3	Major Renovation/Rehabilitation		Year	Additional Detail
		Facade		
		Roof	2017	3rd floor may not be touched
		Interiors	2004	
		HVAC		
		Electrical		
		Site Pavement		
		Accessibility		
4	List other significant capital improvements (focus on recent years; provide approximate date).	Talk to business manager		
5	List any major capital expenditures planned/requested for the next few years. Have they been budgeted?			
6	Describe any on-going extremely problematic, historically chronic, or immediate facility needs.	Boiler issues		

Mark the column corresponding to the appropriate response. Please provide additional details in the Comments column, or backup documentation for any **Yes** responses. (**NA** indicates "Not Applicable", **Unk** indicates "Unknown")

Question		Response				Comments
		Yes	No	Unk	NA	
7	Are there any problems with foundations or structures, like excessive settlement?		X			
8	Are there any wall, window, basement or roof leaks?		X			
9	Has any part of the facility ever contained visible suspect mold growth, or have there been any indoor air quality complaints?	X				By dressing room - Fixed
10	Are your elevators unreliable, with frequent service calls?	X				Broken keys
11	Are there any plumbing leaks, water pressure, or clogging/backup issues?	X				Occasional leaks but do get fixed as needed
12	Have there been any leaks or pressure problems with natural gas, HVAC piping, or steam service?	X				HVAC leaks but fixed as needed
13	Are any areas of the facility inadequately heated, cooled or ventilated? Poorly insulated areas?		X			
14	Is the electrical service outdated, undersized, or problematic?		X			
15	Are there any problems or inadequacies with exterior lighting?		X			Building mounted & interior - LED - installed 6 mo
16	Is site/parking drainage inadequate, with excessive ponding or other problems?		X			
17	Are there any other unresolved construction defects or significant issues/hazards at the property that have not yet been identified above?		X			
18	ADA: Has an accessibility study been previously performed? If so, when?		X			
19	ADA: Have any ADA improvements been made to the property since original construction? Describe.				X	
20	ADA: Has building management reported any accessibility-based complaints or litigation?				X	
21	Are any areas of the property leased to outside occupants?	X				Weekend camps / church



Signature of Assessor



Signature of POC

Appendix D: Accessibility Review and Photos

Visual Survey - 2010 ADA Standards for Accessible Design

Property Name: Rockville High School

BV Project Number: 172559.25R000-195.354

Facility History & Interview					
Question		Yes	No	Unk	Comments
1	Has an accessibility study been previously performed? If so, when?		X		
2	Have any ADA improvements been made to the property since original construction? Describe.			X	
3	Has building management reported any accessibility-based complaints or litigation?			X	

Rockville High School: Accessibility Issues				
Category	Major Issues (ADA study recommended)	Moderate Issues (ADA study recommended)	Minor Issues	None*
Parking				X
Exterior Accessible Route				X
Building Entrances				X
Interior Accessible Route				X
Elevators				X
Public Restrooms				X
Kitchens/Kitchenettes				X
Playgrounds & Swimming Pools	NA			
Other	NA			

**be cognizant that if the "None" box is checked that does not guarantee full compliance; this study is limited in nature*

Rockville High School: Photographic Overview



OVERVIEW OF ACCESSIBLE PARKING AREA



CLOSE-UP OF STALL



ACCESSIBLE PATH



CURB CUT



MAIN ENTRANCE



ADDITIONAL ENTRANCE

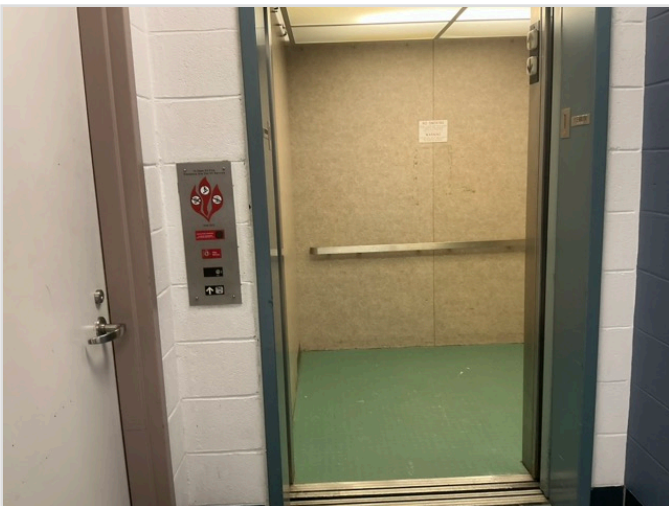
Rockville High School: Photographic Overview



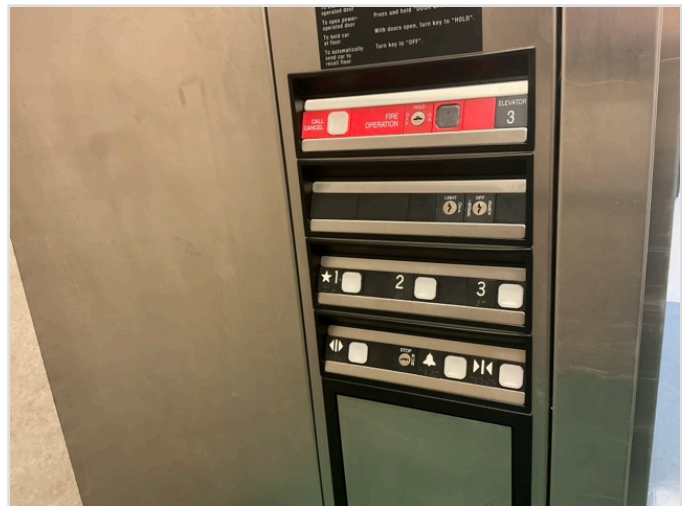
ACCESSIBLE INTERIOR PATH



ACCESSIBLE INTERIOR RAMP



LOBBY LOOKING AT CABS (WITH DOORS OPEN)



IN-CAB CONTROLS



SINK, FAUCET HANDLES AND ACCESSORIES



TOILET STALL OVERVIEW

Rockville High School: Photographic Overview



BREAKROOM OVERVIEW



SINK CLEARANCE

Appendix E:

Component Condition Report

Component Condition Report | Rockville High School / Main Building

UF L3 Code	Location	Condition	Component/Attributes/Capacity	Quantity	RUL	ID
Structure						
B1010	Superstructure	Fair	Structural Framing, Steel Columns & Beams	63,284 SF	40	10304611
B1020	1097 - Gymnasium	Fair	Roof Structure, Flat, Metal Deck Over Bar Joists	6,000 SF	9	10302406
B1080	Stairwell F	Fair	Stairs, Metal or Pan-Filled, Interior	800 SF	30	10302342
B1080	Beside 1077	Fair	Stairs, Metal or Pan-Filled, Interior	800 SF	30	10302364
B1080	Throughout Building	Fair	Stairs, Metal or Pan-Filled, Interior	600 SF	30	10302449
Facade						
B2010	Building Exterior	Fair	Exterior Walls, Metal/Insulated Sandwich Panels	8,000 SF	25	10302300
B2010	Building Exterior	Fair	Exterior Walls, Metal/Insulated Sandwich Panels	5,000 SF	24	10304633
B2010	Building Exterior	Fair	Exterior Walls, Brick Veneer	65,000 SF	30	10302378
B2010	Building Exterior	Fair	Exterior Walls, Concrete, Clean & Seal, Maintain	53,284 SF	11	10304798
B2020	Building Exterior	Fair	Glazing, any type by SF	5,000 SF	9	10304570
B2050	Building Exterior	Fair	Overhead/Dock Door, Steel, 12'x12' (144 SF)	1	9	10304576
B2050	Building Exterior	Fair	Exterior Door, Steel, Standard	3	9	10429847
B2050	Building Exterior	Fair	Exterior Door, Steel, Commercial	30	19	10304538
B2050	Building Exterior	Fair	Overhead/Dock Door, Steel, 12'x12' (144 SF)	1	9	10304550
B2050	Building Exterior	Fair	Exterior Door, Steel, Standard	10	9	10304562
Roofing						
B3010	Roof	Good	Roofing, Built-Up	162,530 SF	18	10429882
B3020	Roof	Fair	Roof Appurtenances, Roof Access Ladder, Steel	145 LF	20	10429814
B3060	Roof	Fair	Roof Hatch, Metal	2	10	10429822
Interiors						
C1010	1097 - Gymnasium	Poor	Movable Partition, Gym Divider, Deluxe/Operable	4,000 SF	2	10302321

Component Condition Report | Rockville High School / Main Building

UF L3 Code	Location	Condition	Component/Attributes/Capacity	Quantity	RUL	ID
C1010	Throughout	Fair	Interior Wall, Brick	4,000 SF	31	10302452
C1010	2nd Floor Gymnasium	Failed	Movable Partition, Gym Divider, Deluxe/Operable	800 SF	0	10304619
C1010	2nd Floor Gymnasium	Failed	Interior Construction, any type, Repairs per Man-Day, Repair	5	1	10304679
C1010	Greenhouse	Fair	Movable Partition, Gym Divider, Deluxe/Operable	600 SF	6	10304713
C1010	1054 - Cafeteria	Poor	Interior Wall, Gypsum Board/Plaster	4,000 SF	2	10302347
C1030	Throughout Building	Fair	Interior Door, Steel, Standard	18	19	10304726
C1030	Throughout Building	Fair	Interior Door, Wood, Solid-Core	214	19	10304750
C1030	Throughout Building	Fair	Interior Door, Wood, Solid-Core	46	20	10302384
C1070	Throughout Building	Fair	Suspended Ceilings, Acoustical Tile (ACT)	265,000 SF	20	10401859
C1090	2nd Floor Gym Restroom	Fair	Toilet Partitions, Plastic/Laminate	3	7	10304613
C1090	Restrooms 3rd Floor	Good	Toilet Partitions, Plastic/Laminate	12	16	10304786
C1090	Special Needs	Fair	Toilet Partitions, Plastic/Laminate	5	11	10304627
C1090	Women's Locker Room 2125	Fair	Locker Rooms, Steel-Baked Enamel, 12" W x 15" D x 72" H	700 LF	8	10304742
C1090	Gang restrooms	Fair	Toilet Partitions, Plastic/Laminate	36	13	10302355
C1090	Women's Locker Room 2125	Fair	Toilet Partitions, Plastic/Laminate	5	8	10304656
C1090	Throughout Building	Fair	Lockers, Steel-Baked Enamel, 12" W x 15" D x 72" H	2,500 LF	15	10302354
C1090	Restrooms 2nd Floor	Fair	Toilet Partitions, Plastic/Laminate	12	11	10304701
C2010	Throughout Building	Fair	Wall Finishes, any surface, Prep & Paint	500,000 SF	7	10304784
C2010	Throughout Building	Fair	Wall Finishes, Ceramic Tile	12,000 SF	19	10304741
C2010	Throughout Building	Fair	Wall Finishes, Acoustical Tile (ACT), Fabric-Faced	8,500 SF	9	10304791
C2010	2nd Floor Gymnasium	Fair	Wall Finishes, Gym Wall Pads, Secured and 1.5" Thick	800 SF	10	10304642
C2030	1055B - Commercial Kitchen	Fair	Flooring, Quarry Tile	1,500 SF	30	10302383
C2030	Wrestling / Dance Room 2135	Fair	Flooring, Wrestling Mats, Secured and 2" Thin	2,000 SF	6	10304586
C2030	Throughout Building	Fair	Flooring, Rubber Tile	3,500 SF	9	10304591

Component Condition Report | Rockville High School / Main Building

UF L3 Code	Location	Condition	Component/Attributes/Capacity	Quantity	RUL	ID
C2030	Office Areas	Good	Flooring, Carpet, Commercial Tile	2,000 SF	7	10304729
C2030	Throughout Building	Good	Flooring, Carpet, Commercial Standard	9,000 SF	8	10304765
C2030	Throughout Building	Fair	Flooring, any surface, w/ Paint or Sealant, Prep & Paint	10,000 SF	7	10302361
C2030	Locker Rooms	Fair	Flooring, Quarry Tile	2,500 SF	29	10304593
C2030	Weight Room	Fair	Flooring, Rubber Tile	1,500 SF	4	10302442
C2030	Throughout Building	Fair	Flooring, Vinyl Tile (VCT)	260,000 SF	6	10304645
C2030	Throughout Building	Fair	Flooring, Wood, Sports, Refinish	15,000 SF	5	10304667
C2030	Throughout Building	Fair	Flooring, Ceramic Tile	7,000 SF	19	10304616
C2050	Throughout Building	Fair	Ceiling Finishes, exposed irregular elements, Prep & Paint	12,500 SF	5	10304764
C2050	Throughout Building	Fair	Ceiling Finishes, any flat surface, Prep & Paint	20,000 SF	5	10304603
C2050	Throughout Building	Fair	Ceiling Finishes, Metal	20,000 SF	30	10302451
Conveying						
D1010	Elevator 1	Fair	Passenger Elevator, Hydraulic, 2 Floors, 1500 to 2500 LB, Renovate	1	10	10302350
D1010	Elevator 2	Fair	Elevator Cab Finishes, Economy	1	5	10302376
Plumbing						
D2010	Special Needs	Fair	Toilet, Commercial Water Closet	5	9	10304767
D2010	2nd Floor Gym Restroom	Fair	Toilet, Commercial Water Closet	3	9	10304702
D2010	Boiler Room	Fair	Water Heater, Gas, Commercial (600 MBH), 200 to 300 GAL, 400 GAL	1	3	10302305
D2010	Restrooms 3rd Floor	Fair	Toilet, Commercial Water Closet	12	9	10304698
D2010	3rd Floor	Good	Drinking Fountain, Wall-Mounted, Bi-Level	2	11	10304695
D2010	2nd Floor	Fair	Toilet, Commercial Water Closet	1	9	10304757
D2010	Interior circulation	Fair	Drinking Fountain, Wall-Mounted, Single-Level	1	10	10302315
D2010	Restrooms 2nd Floor Staff	Fair	Toilet, Commercial Water Closet	2	9	10304730
D2010	Nurses office	Fair	Sink/Lavatory, Vanity Top, Enameled Steel	1	10	10302439

Component Condition Report | Rockville High School / Main Building

UF L3 Code	Location	Condition	Component/Attributes/Capacity	Quantity	RUL	ID
D2010	Restrooms 3rd Floor Staff	Fair	Sink/Lavatory, Wall-Hung, Enameled Steel	1	9	10304590
D2010	Gang restrooms	Fair	Toilet, Commercial Water Closet	30	10	10302443
D2010	3012 Food Sciences	Fair	Sink/Lavatory, Vanity Top, Stainless Steel	9	21	10304723
D2010	Nurses office	Fair	Sink/Lavatory, Wall-Hung	2	10	10302311
D2010	Restrooms 2nd Floor	Fair	Urinal, Standard	4	9	10304780
D2010	Nurses office	Fair	Toilet, Commercial Water Closet	2	10	10302431
D2010	Restrooms 3rd Floor	Fair	Urinal, Standard	4	9	10304761
D2010	Across from 1097 - Gymnasium	Fair	Drinking Fountain, Wall-Mounted, Bi-Level	1	9	10302320
D2010	Boiler Room	Good	Water Heater, Gas, Commercial (200 MBH), 100 to 199 GAL, 118 GAL	1	17	10302370
D2010	Gang restrooms	Fair	Sink/Lavatory, Wall-Hung, Enameled Steel	23	10	10302388
D2010	2nd Floor Gym Restroom	Fair	Sink/Lavatory, Wall-Hung, Enameled Steel	4	9	10304648
D2010	2nd Floor Gym Restroom	Good	Drinking Fountain, Wall-Mounted, Bi-Level	1	11	10304672
D2010	Nurses office	Fair	Emergency Plumbing Fixtures, Eye Wash	1	5	10302425
D2010	2nd Floor	Fair	Drinking Fountain, Wall-Mounted, Bi-Level	2	6	10304661
D2010	Classrooms Science	Fair	Emergency Plumbing Fixtures, Eye Wash & Shower Station	13	11	10304755
D2010	2102	Fair	Sink/Lavatory, Service Sink, Floor	1	14	10304794
D2010	Women's Locker Room 2125	Fair	Sink/Lavatory, Wall-Hung, Enameled Steel	4	9	10304592
D2010	Throughout Building	Fair	Sink/Lavatory, Vanity Top, Stainless Steel	29	10	10302363
D2010	Office Areas	Fair	Toilet, Commercial Water Closet	2	9	10304772
D2010	Nurses office	Fair	Emergency Plumbing Fixtures, Eye Wash	1	4	10302357
D2010	2nd Floor	Fair	Drinking Fountain, Wall-Mounted, Single-Level	1	10	10304610
D2010	Beside 3012	Fair	Drinking Fountain, Wall-Mounted, Bi-Level	1	9	10302398
D2010	Office Areas	Fair	Sink/Lavatory, Wall-Hung, Enameled Steel	2	9	10304712
D2010	2nd Floor	Fair	Drinking Fountain, Wall-Mounted, Single-Level	1	7	10304709

Component Condition Report | Rockville High School / Main Building

UF L3 Code	Location	Condition	Component/Attributes/Capacity	Quantity	RUL	ID
D2010	Women's Locker Room 2125	Fair	Shower, Ceramic Tile	10	9	10304597
D2010	Women's Locker Room 2125	Fair	Drinking Fountain, Wall-Mounted, Bi-Level	1	7	10304678
D2010	Women's Locker Room 2125	Fair	Toilet, Commercial Water Closet	1	9	10304649
D2010	Special Needs	Fair	Sink/Lavatory, Wall-Hung, Enameled Steel	1	9	10304604
D2010	2nd Floor Building Services	Fair	Sink/Lavatory, Service Sink, Floor	1	14	10304770
D2010	Restrooms 3rd Floor	Fair	Sink/Lavatory, Wall-Hung, Enameled Steel	8	9	10304658
D2010	Restrooms 2nd Floor Staff	Fair	Sink/Lavatory, Wall-Hung, Enameled Steel	2	9	10304792
D2010	Restrooms 2nd Floor	Fair	Sink/Lavatory, Wall-Hung, Enameled Steel	8	9	10304646
D2010	Science Prep	Good	Emergency Plumbing Fixtures, Eye Wash	2	16	10304682
D2010	Across from 1097 - Gymnasium	Fair	Drinking Fountain, Wall-Mounted, Bi-Level	1	6	10302326
D2010	Women's Locker Room 2125	Fair	Sink/Lavatory, Wall-Hung, Enameled Steel	1	9	10304589
D2010	Boiler Room	Fair	Water Heater, Gas, Commercial (200 MBH), 100 to 199 GAL, 130 GAL	1	8	10302343
D2010	Building Services 2052	Fair	Sink/Lavatory, Service Sink, Floor	1	14	10304797
D2010	Women's Locker Room 2125	Fair	Toilet, Commercial Water Closet	5	9	10304716
D2010	2nd Floor Gym Restroom	Fair	Urinal, Standard	1	9	10304768
D2010	Special Needs	Fair	Toilet, Commercial Water Closet	1	9	10304781
D2010	Gang restrooms	Fair	Urinal, Standard	9	10	10302296
D2010	Special Needs	Fair	Sink/Lavatory, Wall-Hung, Enameled Steel	4	9	10304703
D2010	1095 Art	Fair	Sink/Lavatory, Vanity Top, Stainless Steel	5	10	10302334
D2010	Restrooms 3rd Floor Staff	Fair	Toilet, Commercial Water Closet	1	9	10304721
D2010	2nd Floor	Fair	Sink/Lavatory, Wall-Hung, Enameled Steel	1	9	10304693
D2010	Throughout Building	Fair	Plumbing System, Supply & Sanitary, Low Density (excludes fixtures)	317,731 SF	19	10304601
D2010	Special Needs	Fair	Urinal, Standard	2	9	10304598
D2010	2016	Fair	Sink/Lavatory, Service Sink, Floor	1	14	10304617

Component Condition Report | Rockville High School / Main Building

UF L3 Code	Location	Condition	Component/Attributes/Capacity	Quantity	RUL	ID
D2010	Restrooms 2nd Floor	Fair	Toilet, Commercial Water Closet	12	9	10304632
D2030	Roof	Fair	Supplemental Components, Drains, Roof, 6 IN	134	20	10429886
D2060	Boiler Room	Fair	Air Compressor, Tank-Style, 5 HP, 3 HP	1	3	10302367
HVAC						
D3020	1076 - Auditorium	Fair	Unit Heater, Electric, 3 kW	1	4	10302318
D3020	Greenhouse	Fair	Unit Heater, Electric, 6 - 10 kW	1	7	10304585
D3020	Boiler Room	Fair	Boiler, Gas, HVAC, 5001 to 10000 MBH, 7000 MBH	1	10	10302394
D3020	Storage 2045	Fair	Unit Heater, Hydronic, 11 - 20 MBH	1	7	10304756
D3020	Boiler Room	Fair	Boiler, Gas, HVAC, 5001 to 10000 MBH, 7000 MBH	1	10	10302402
D3030	Chiller Corral	Poor	Cooling Tower, (Typical) Open Circuit , 101 to 200 TON, Inaccessible	1	2	10302297
D3030	Boiler Room	Fair	Chiller, Water-Cooled, 401 to 500 TON, 500 TON	1	5	10302290
D3030	Roof	Fair	Split System Ductless, Single Zone, 2 TON	1	9	10429825
D3030	Boiler Room	Fair	Chiller, Water-Cooled, 10 to 20 TON	1	3	10302407
D3030	Chiller Corral	Fair	Chiller, Air-Cooled, 101 to 150 TON [CH-2]	1	5	10302309
D3030	Roof	Fair	Ductless Mini-Split, Single Zone, Condenser & Evaporator, 1.5 to 2 TON, 2 TON	1	9	10429811
D3050	Boiler Room	Fair	Pump, Distribution, HVAC Heating Water, 4 to 5 HP, 5 HP	1	5	10302419
D3050	Room 2116A	Fair	Air Handler, Interior AHU, Easy/Moderate Access, 4001 to 6000 CFM, 4444 [H&V-1A]	1	9	10304631
D3050	Boiler Room	Fair	Pump, Distribution, HVAC Heating Water, 8 to 10 HP, 10 HP [P-3]	1	5	10302400
D3050	Electrical Room 3000	Fair	Air Handler, Interior AHU, Easy/Moderate Access, 30001 to 40000 CFM, 20000 [AHU-3]	1	10	10304665
D3050	Room 2072	Fair	Air Handler, Interior AHU, Easy/Moderate Access, 4001 to 6000 CFM, 4444 [AHU-6B]	1	10	10304651
D3050	Boiler Room	Fair	Pump, Distribution, HVAC Heating Water, 16 to 25 HP, 20 HP [P-2]	1	5	10302301
D3050	Room 2116A	Fair	Air Handler, Interior AHU, Easy/Moderate Access, 15001 to 20000 CFM, 18225 [AHU-11]	1	9	10304621
D3050	Room 2023	Fair	Air Handler, Interior AHU, Easy/Moderate Access, 20001 to 25000 CFM, 24165 [AHU-5]	1	9	10304609
D3050	Room 2131	Fair	Air Handler, Interior AHU, Easy/Moderate Access, 2401 to 4000 CFM, 3555 [AHU-9]	1	4	10304595

Component Condition Report | Rockville High School / Main Building

UF L3 Code	Location	Condition	Component/Attributes/Capacity	Quantity	RUL	ID
D3050	Boiler Room	Fair	Pump, Distribution, HVAC Heating Water, 16 to 25 HP	1	5	10302441
D3050	Room 2026	Fair	Air Handler, Interior AHU, Easy/Moderate Access, 25001 to 30000 CFM, 29110 [AHU-2]	1	9	10304664
D3050	Boiler Room	Fair	Pump, Distribution, HVAC Heating Water, 16 to 25 HP, 20 HP [P-7]	1	5	10302294
D3050	Throughout Building	Fair	HVAC System, Hydronic Piping, 4-Pipe	317,731 SF	19	10304626
D3050	Room 2136A	Fair	Air Handler, Exterior AHU, 8001 to 10000 CFM, 9028	1	4	10386966
D3050	Room 2082	Fair	Air Handler, Interior AHU, Easy/Moderate Access, 4001 to 6000 CFM, 4444 [AHU-6C]	1	9	10304717
D3050	Room 2074	Fair	Air Handler, Interior AHU, Easy/Moderate Access, 4001 to 6000 CFM, 4444 [AHU-6A]	1	9	10304687
D3050	Electrical Room 2133A	Fair	Air Handler, Interior AHU, Easy/Moderate Access, 4001 to 6000 CFM, 4444 [H&V-1B]	1	10	10304612
D3050	Room 2092	Fair	Air Handler, Interior AHU, Easy/Moderate Access, 10001 to 15000 CFM, 10140 [AHU-7]	1	10	10304685
D3050	Boiler Room	Fair	Pump, Distribution, HVAC Chilled or Condenser Water, 26 to 50 HP, 30 HP	1	5	10302373
D3050	Boiler Room	Fair	Pump, Distribution, HVAC Chilled or Condenser Water, 4 to 5 HP, 5 HP	1	5	10302299
D3050	Penthouse	Fair	Air Handler, Interior AHU, Easy/Moderate Access, 6001 to 8000 CFM, 4000 [H&V #3]	1	10	10429866
D3050	Throughout Building	Fair	HVAC System, Ductwork w/ VAV/FCU, Medium Density	317,731 SF	9	10304758
D3050	Room 2131	Fair	Air Handler, Interior AHU, Easy/Moderate Access, 4001 to 6000 CFM, 4860 [H&V-2]	1	9	10304681
D3050	Boiler Room	Fair	Pump, Distribution, HVAC Chilled or Condenser Water, 4 to 5 HP, 5 HP	1	5	10302303
D3050	Room 2092	Fair	Air Handler, Interior AHU, Easy/Moderate Access, 15001 to 20000 CFM, 18575 [AHU-8]	1	9	10304762
D3050	Penthouse	Fair	Air Handler, Interior AHU, Easy/Moderate Access, 30001 to 40000 CFM, 20000 [AHU #10]	1	10	10429803
D3050	Penthouse	Fair	Air Handler, Interior AHU, Easy/Moderate Access, 1201 to 2400 CFM, 2400 [H&V#4]	1	5	10429833
D3060	Roof	Fair	Fan, Centrifugal, 16" Diameter, 1001 to 2000 CFM, 1075 [EF-L6E]	1	5	10429892
D3060	Roof	Fair	Fan, Centrifugal, 16" Diameter, 1001 to 2000 CFM, 1075 [EF-L1F]	1	5	10429805
D3060	Roof	Fair	Fan, Centrifugal, 12" Diameter, 100 to 1000 CFM, 561 [RF-8]	1	5	10429856
D3060	Roof	Fair	Fan, Centrifugal, 16" Diameter, 1001 to 2000 CFM, 1265 [EF-5]	1	5	10429880
D3060	Roof	Fair	Fan, Centrifugal, 12" Diameter, 100 to 1000 CFM, 500 [F-03]	1	5	10429874
D3060	Roof	Fair	Fan, Centrifugal, 12" Diameter, 100 to 1000 CFM, 500 [F-04]	1	5	10429850

Component Condition Report | Rockville High School / Main Building

UF L3 Code	Location	Condition	Component/Attributes/Capacity	Quantity	RUL	ID
D3060	Roof	Fair	Fan, Centrifugal, 16" Diameter, 1001 to 2000 CFM, 1397 [EF-19]	1	5	10429851
D3060	Penthouse	Fair	Fan, Centrifugal, 16" Diameter, 1001 to 2000 CFM, 1258 [EF-7]	1	5	10429870
D3060	Roof	Fair	Fan, Centrifugal, 16" Diameter, 1001 to 2000 CFM, 1128 [EF-21]	1	5	10429820
D3060	Roof	Fair	Fan, Centrifugal, 16" Diameter, 1001 to 2000 CFM, 1725 [EF-2]	1	5	10429853
D3060	Roof	Fair	Fan, Centrifugal, 16" Diameter, 1001 to 2000 CFM, 1075 [EF-L6A]	1	5	10429864
D3060	Roof	Fair	Fan, Centrifugal, 16" Diameter, 1001 to 2000 CFM, 1075 [EF-L3C]	1	5	10429815
D3060	Roof	Fair	Fan, Centrifugal, 16" Diameter, 1001 to 2000 CFM, 1075 [EF-L2B]	1	5	10429890
D3060	Roof	Fair	Fan, Centrifugal, 16" Diameter, 1001 to 2000 CFM, 1725 [EF-1]	1	5	10429808
D3060	Roof	Fair	Fan, Centrifugal, 12" Diameter, 100 to 1000 CFM, 561 [RF-4]	1	5	10429876
D3060	Roof	Fair	Fan, Centrifugal, 16" Diameter, 1001 to 2000 CFM, 1550 [EF-16]	1	5	10429834
D3060	Roof	Fair	Fan, Centrifugal, 16" Diameter, 1001 to 2000 CFM, 1005 [EF-8]	1	5	10429867
D3060	Roof	Fair	Fan, Centrifugal, 12" Diameter, 100 to 1000 CFM, 431 [RF-HV2-B]	1	5	10429826
D3060	Roof	Fair	Fan, Centrifugal, 16" Diameter, 1001 to 2000 CFM, 1490 [EF-22]	1	5	10429871
D3060	Roof	Fair	Fan, Centrifugal, 16" Diameter, 1001 to 2000 CFM, 1075 [EF-L1E]	1	5	10429813
D3060	Roof	Fair	Fan, Centrifugal, 16" Diameter, 1001 to 2000 CFM, 1607 [EF-10]	2	5	10429911
D3060	Roof	Fair	Fan, Centrifugal, 12" Diameter, 100 to 1000 CFM, 561 [RF-1]	1	5	10429827
D3060	Roof	Fair	Fan, Centrifugal, 16" Diameter, 1001 to 2000 CFM, 1229 [EF-1]	1	5	10429828
D3060	Roof	Fair	Fan, Centrifugal, 24" Diameter, 2001 to 5000 CFM, 561 [RF-11]	1	5	10429861
D3060	Roof	Fair	Fan, Centrifugal, 16" Diameter, 1001 to 2000 CFM, 1075	1	5	10429888
D3060	Roof	Fair	Fan, Centrifugal, 16" Diameter, 1001 to 2000 CFM, 1075	1	5	10429807
D3060	Roof	Fair	Fan, Centrifugal, 16" Diameter, 1001 to 2000 CFM, 1075 [EF-L1D]	1	5	10429852
D3060	Roof	Fair	Fan, Centrifugal, 16" Diameter, 1001 to 2000 CFM, 1075 [EF-L4A]	1	5	10429835
D3060	Roof	Fair	Fan, Centrifugal, 16" Diameter, 1001 to 2000 CFM, 1075 [EF-L2E]	1	5	10429891
D3060	Roof	Fair	Fan, Centrifugal, 16" Diameter, 1001 to 2000 CFM, 1490 [EF-20]	1	5	10429821

Component Condition Report | Rockville High School / Main Building

UF L3 Code	Location	Condition	Component/Attributes/Capacity	Quantity	RUL	ID
D3060	Roof	Fair	Fan, Centrifugal, 12" Diameter, 100 to 1000 CFM, 561 [RF-5]	1	5	10429879
D3060	Roof	Fair	Fan, Centrifugal, 16" Diameter, 1001 to 2000 CFM, 1075 [EF-L3A]	1	5	10429843
D3060	Roof	Fair	Fan, Centrifugal, 16" Diameter, 1001 to 2000 CFM, 1075 [EF-L6C]	1	5	10429801
D3060	Roof	Fair	Fan, Centrifugal, 16" Diameter, 1001 to 2000 CFM, 1725 [RF-HV1B]	1	5	10429859
D3060	Roof	Fair	Fan, Centrifugal, 16" Diameter, 1001 to 2000 CFM, Illegible [13]	1	5	10429806
D3060	Roof	Fair	Fan, Centrifugal, 16" Diameter, 1001 to 2000 CFM, 1075 [EF-L3B]	1	5	10429839
D3060	Roof	Fair	Fan, Centrifugal, 12" Diameter, 100 to 1000 CFM, 525 [RF-6C]	1	5	10429884
D3060	Roof	Fair	Fan, Centrifugal, 16" Diameter, 1001 to 2000 CFM, 1075 [F-01]	1	5	10429846
D3060	Roof	Fair	Fan, Centrifugal, 16" Diameter, 1001 to 2000 CFM, 1075 [EF-L5E]	1	5	10429883
D3060	Roof	Fair	Fan, Centrifugal, 16" Diameter, 1001 to 2000 CFM, 1490 [EF-18]	1	5	10429869
D3060	Roof	Fair	Fan, Centrifugal, 24" Diameter, 2001 to 5000 CFM, 431 [RF-HV2A]	1	5	10429844
D3060	Roof	Fair	Fan, Centrifugal, 12" Diameter, 100 to 1000 CFM, Inaccessible [EF-23]	1	5	10429838
D3060	Roof	Fair	Fan, Centrifugal, 12" Diameter, 100 to 1000 CFM, 561 [RF-2]	1	5	10429878
D3060	Roof	Fair	Fan, Centrifugal, 24" Diameter, 2001 to 5000 CFM, 431 [EF-6]	1	5	10429832
D3060	Roof	Fair	Fan, Centrifugal, 12" Diameter, 100 to 1000 CFM, 525 [RF-6D]	1	5	10429845
D3060	Roof	Fair	Fan, Centrifugal, 16" Diameter, 1001 to 2000 CFM, 1265 [EF-12]	1	5	10429841
D3060	Roof	Fair	Fan, Centrifugal, 16" Diameter, 1001 to 2000 CFM, Illegible	1	5	10429854
D3060	Roof	Fair	Fan, Centrifugal, 16" Diameter, 1001 to 2000 CFM, 1550 [EF-15]	1	5	10429798
D3060	Roof	Fair	Fan, Centrifugal, 16" Diameter, 1001 to 2000 CFM, 1075 [EF-L5D]	1	5	10429855
D3060	Roof	Fair	Fan, Centrifugal, 12" Diameter, 100 to 1000 CFM, 500 [F-05]	1	5	10429818
D3060	Roof	Fair	Fan, Centrifugal, 16" Diameter, 1001 to 2000 CFM, 1075 [EF-L1C]	1	5	10429887
D3060	Roof	Fair	Fan, Centrifugal, 16" Diameter, 1001 to 2000 CFM, 1075 [EF-L5C]	1	5	10429865
D3060	Roof	Fair	Fan, Centrifugal, 16" Diameter, 1001 to 2000 CFM, 1075 [EF-L3C]	1	5	10429810
D3060	Roof	Fair	Fan, Centrifugal, 12" Diameter, 100 to 1000 CFM, 431 [RF-6A]	1	5	10429799

Component Condition Report | Rockville High School / Main Building

UF L3 Code	Location	Condition	Component/Attributes/Capacity	Quantity	RUL	ID
D3060	Roof	Fair	Fan, Centrifugal, 16" Diameter, 1001 to 2000 CFM, 1075 [RF-7]	1	5	10429830
D3060	Roof	Fair	Fan, Centrifugal, 12" Diameter, 100 to 1000 CFM, Illegible [EF-10]	1	5	10429877
D3060	Roof	Fair	Fan, Centrifugal, 16" Diameter, 1001 to 2000 CFM, 1490 [EF-17]	1	5	10429858
D3060	Roof	Fair	Fan, Centrifugal, 12" Diameter, 100 to 1000 CFM, 431 [RF-6B]	1	5	10429802
D3060	Roof	Fair	Fan, Centrifugal, 16" Diameter, 1001 to 2000 CFM, 1229 [EF-2]	1	5	10429849
D3060	Roof	Fair	Fan, Centrifugal, 16" Diameter, 1001 to 2000 CFM, Illegible	1	5	10429819
D3060	Roof	Fair	Fan, Centrifugal, 12" Diameter, 100 to 1000 CFM, 431 [RF-9]	1	5	10429823
D3060	Roof	Fair	Fan, Centrifugal, 16" Diameter, 1001 to 2000 CFM, Illegible [EF-L5B]	1	5	10429831
D3060	Roof	Fair	Fan, Centrifugal, 16" Diameter, 1001 to 2000 CFM, Illegible [EF-L6B]	1	5	10429800
D3060	INTAKE	Fair	Fan, Centrifugal, 24" Diameter, 2001 to 5000 CFM	1	5	10429863
D3060	Penthouse	Fair	Exhaust Fan, Centrifugal, 12" Damper, 908 CFM [EF-9]	1	6	10429881
D3060	Roof	Fair	Fan, Centrifugal, 16" Diameter, 1001 to 2000 CFM, 1075 [EF-L3E]	1	5	10429840
D3060	Roof	Fair	Fan, Centrifugal, 24" Diameter, 2001 to 5000 CFM, 525 [RF-HV1A]	1	5	10429885
D3060	Roof	Fair	Fan, Centrifugal, 16" Diameter, 1001 to 2000 CFM, 1075 [EF-L6D]	1	5	10429872
D3060	Penthouse	Fair	Exhaust Fan, Centrifugal, 16" Damper, 1725 CFM [EF-13]	1	6	10429809
D3060	Roof	Fair	Fan, Centrifugal, 16" Diameter, 1001 to 2000 CFM, 1075 [EF-L2C]	1	5	10429829
D3060	Penthouse	Fair	Exhaust Fan, Centrifugal, 12" Damper, Inaccessible CFM	1	6	10429868
D3060	Roof	Fair	Fan, Centrifugal, 16" Diameter, 1001 to 2000 CFM, 1550 [EF-24]	1	5	10429817
D3060	Roof	Fair	Fan, Centrifugal, 12" Diameter, 100 to 1000 CFM, 561 [RF-3]	1	5	10429842
D3060	Roof	Fair	Fan, Centrifugal, 12" Diameter, 100 to 1000 CFM, 500 [F-06]	1	5	10429812
D3060	Roof	Fair	Fan, Centrifugal, 16" Diameter, 1001 to 2000 CFM, 1075 [EF-L2D]	1	5	10429824
Fire Protection						
D4010	Basement	Fair	Supplemental Components, Fire Riser, Wet, 6 IN	1	20	10302337
D4010	Basement	Fair	Backflow Preventer, Fire Suppression, 6 IN	1	10	10302302

Component Condition Report | Rockville High School / Main Building

UF L3 Code	Location	Condition	Component/Attributes/Capacity	Quantity	RUL	ID
D4010	Throughout Building	Fair	Fire Suppression System, Existing Sprinkler Heads, by SF	317,731 SF	9	10304724
Electrical						
D5010	Roof	Fair	Solar Power, Photovoltaic (PV) Panel, 24 SF	962	3	10429889
D5010	Roof	Fair	Solar Power, Inverter, 2.0 KW [1]	1	4	10429848
D5010	Boiler Room	Fair	Automatic Transfer Switch, ATS, 100 AMP	1	5	10302341
D5010	Roof	Fair	Solar Power, Inverter, 2.0 KW [3]	1	4	10429816
D5010	Building Exterior	Fair	Generator, Gas or Gasoline, 85 - 100 KW	1	6	10304546
D5010	Roof	Fair	Solar Power, Inverter, 2.0 KW [2]	1	4	10429875
D5020	Electrical Room 2116A	Fair	Distribution Panel, 277/480 V, 600 AMP [2MDPW]	1	9	10304719
D5020	Boiler Room	Good	Secondary Transformer, Dry, Stepdown, 300 KVA	1	30	10302381
D5020	Boiler Room	Fair	Switchboard, 120/208 V, 800 AMP, 800 AMPS [TLP1]	1	31	10302386
D5020	Electrical Room 2116A	Fair	Secondary Transformer, Dry, Stepdown, 15 KVA	1	9	10304790
D5020	Boiler Room	Fair	Switchboard, 120/208 V, 1200 AMP, 1200 AMP [TWP1]	1	31	10302412
D5020	Electrical Room 2092	Fair	Switchboard, 277/480 V, 600 AMP [2MDPS]	1	19	10304602
D5020	Electrical Room 2092	Fair	Distribution Panel, 120/208 V, 400 AMP [2LPA]	1	9	10304796
D5020	3012	Fair	Distribution Panel, 120/208 V, 400 AMP, 400 AMP [FL]	1	21	10302328
D5020	Electrical Room 3000	Fair	Switchboard, 120/208 V, 800 AMP [3LDPB]	1	19	10304773
D5020	Electrical Room 2116A	Fair	Secondary Transformer, Dry, Stepdown, 112.5 KVA	1	9	10304745
D5020	Electrical Room 2026	Fair	Secondary Transformer, Dry, Stepdown, 150 KVA [T-2B]	1	9	10304630
D5020	Boiler Room	Fair	Distribution Panel, 277/480 V, 1200 AMP, 1200 AMP	1	21	10302329
D5020	Electrical Room 2026	Fair	Distribution Panel, 120/208 V, 400 AMP [K2PN]	1	9	10304694
D5020	Electrical Room 2092	Good	Secondary Transformer, Dry, Stepdown, 75 KVA	1	30	10304776
D5020	Electrical Room 2023	Good	Secondary Transformer, Dry, Stepdown, 15 KVA	1	30	10304739
D5020	Boiler Room	Fair	Secondary Transformer, Dry, Stepdown, 45 KVA, 45 KVA	1	10	10302317

Component Condition Report | Rockville High School / Main Building

UF L3 Code	Location	Condition	Component/Attributes/Capacity	Quantity	RUL	ID
D5020	Boiler Room	Fair	Switchboard, 277/480 V, 600 AMP, 600 AMPS	1	20	10302353
D5020	Electrical Room 3000	Fair	Distribution Panel, 120/208 V, 400 AMP [K3PN]	1	9	10304749
D5020	1055B - Commercial Kitchen	Fair	Distribution Panel, 120/208 V, 600 AMP, 600 AMPS [1K]	1	10	10302385
D5020	Electrical Room 2023	Fair	Distribution Panel, 277/480 V, 400 AMP [2MDPR]	1	9	10304787
D5020	Electrical Room 3000	Fair	Distribution Panel, 120/208 V, 400 AMP [K3PN]	1	9	10304788
D5020	Electrical Room 2116A	Fair	Distribution Panel, 120/240 V, 400 AMP [2LDPD]	1	9	10304728
D5020	Electrical Room 2026	Fair	Secondary Transformer, Dry, Stepdown, 15 KVA [T-2ELB]	1	9	10304615
D5020	Boiler Room	Fair	Switchboard, 277/480 V, 600 AMP, 600 AMP [EM]	1	20	10302338
D5020	3012 Food Science	Fair	Distribution Panel, 120/208 V, 400 AMP [FL]	1	9	10304628
D5020	3012 Food Science	Fair	Distribution Panel, 120/208 V, 400 AMP [FL]	1	9	10304647
D5020	Electrical Room 2023	Good	Secondary Transformer, Dry, Stepdown, 112.5 KVA	1	30	10304629
D5020	Electrical Room 2116A	Fair	Distribution Panel, 120/240 V, 400 AMP [2LDPD]	1	9	10304691
D5020	Electrical Room 3000	Fair	Distribution Panel, 277/480 V, 800 AMP [3MDPM SEC A]	1	9	10304650
D5020	Electrical Room 2026	Fair	Distribution Panel, 277/480 V, 600 AMP [2MDPN]	1	9	10304793
D5020	Electrical Room 2092	Fair	Distribution Panel, 120/208 V, 400 AMP [2LPA]	1	9	10304623
D5020	Electrical Room 2116A	Fair	Distribution Panel, 277/480 V, 600 AMP [2MDPW]	1	9	10304697
D5020	Electrical Room 2026	Fair	Distribution Panel, 120/208 V, 400 AMP [2LPB]	1	9	10304748
D5020	Electrical Room 2026	Fair	Distribution Panel, 120/208 V, 400 AMP [K2PN]	1	9	10304704
D5020	1055B - Commercial Kitchen	Fair	Switchboard, 120/208 V, 600 AMP, 600 AMP [1K]	1	20	10302358
D5020	3012	Fair	Distribution Panel, 120/240 V, 400 AMP [FL]	1	10	10302319
D5020	Electrical Room 3000	Fair	Secondary Transformer, Dry, Stepdown, 30 KVA [T-K3PN]	1	9	10304643
D5020	Electrical Room 2026	Fair	Distribution Panel, 120/208 V, 400 AMP [2LPB]	1	9	10304736
D5020	Electrical Room 2116A	Fair	Secondary Transformer, Dry, Stepdown, 45 KVA	1	9	10304783
D5020	Electrical Room 2023	Good	Secondary Transformer, Dry, Stepdown, 75 KVA	1	30	10304636

Component Condition Report | Rockville High School / Main Building

UF L3 Code	Location	Condition	Component/Attributes/Capacity	Quantity	RUL	ID	
D5020	Electrical Room 2092	Good	Secondary Transformer, Dry, Stepdown, 15 KVA	1	30	10304692	
D5020	Electrical Room 2023	Fair	Distribution Panel, 120/208 V, 400 AMP [2LDPC]	1	9	10304727	
D5020	Boiler Room	Fair	Switchgear, 277/480 V, 4000 AMP, 4000 AMP	1	20	10302401	
D5020	Boiler Room	Fair	Switchboard, 277/480 V, 600 AMP, 600 AMP	1	20	10302351	
D5020	Electrical Room 2092	Good	Secondary Transformer, Dry, Stepdown, 112.5 KVA	1	30	10304659	
D5020	Electrical Room 2026	Fair	Secondary Transformer, Dry, Stepdown, 112.5 KVA [T-K2PN]	1	9	10304754	
D5030	Throughout Building	Fair	Electrical System, Wiring & Switches, Average or Low Density/Complexity	317,731	SF	19	10304655
D5040	Throughout Building	Excellent	Interior Lighting System, Full Upgrade, High Density & Standard Fixtures	317,731	SF	21	10304747
D5040	Building Exterior	Good	Exterior Light, any type, w/ LED Replacement, 100 WATT	44	20	10304566	
D5040	2nd Floor Gymnasium	Fair	High Intensity Discharge (HID) Fixtures, Metal Halide, Gymnasium Lighting, 400 W	24	9	10304734	
D5040	1076 - Auditorium	Fair	Stage Lighting System, Full Upgrade, Specialty Fixtures	1,200	SF	6	10302310
D5040	Building Exterior	Good	Exterior Light, any type, w/ LED Replacement, 400 WATT	6	20	10304559	
D5040	Throughout Building	Fair	Emergency & Exit Lighting System, Full Interior Upgrade, LED	317,731	SF	6	10304759
Fire Alarm & Electronic Systems							
D6030	Projection Booth Room 2073	Fair	Sound System, Theater/Auditorium/Church	7,500	SF	5	10304641
D6060	Throughout Building	Fair	Intercom/PA System, Public Address Upgrade, Facility-Wide	317,731	SF	8	10304696
D7030	Throughout Building	Fair	Security/Surveillance System, Full System Upgrade, Average Density	317,731	SF	8	10304743
D7050	Boiler Room	Fair	Fire Alarm Panel, Fully Addressable	1	4	10302414	
D7050	Throughout Building	Fair	Fire Alarm System, Full System Upgrade, Standard Addressable, Upgrade/Install	317,731	SF	9	10304688
D8010	Throughout Building	Fair	BAS/HVAC Controls, Basic System or Legacy Upgrades, Upgrade/Install	317,731	SF	5	10304668
Equipment & Furnishings							
E1030	3012 Food Science	Fair	Foodservice Equipment, Refrigerator, 1-Door Reach-In	1	5	10304634	
E1030	1055B - Commercial Kitchen	Fair	Commercial Kitchen Line, Serving/Warming Equipment	1	LF	3	10302450
E1030	1055B - Commercial Kitchen	Fair	Commercial Kitchen Line, Preparation Tables/Areas	8	LF	4	10302352

Component Condition Report | Rockville High School / Main Building

UF L3 Code	Location	Condition	Component/Attributes/Capacity	Quantity	RUL	ID
E1030	1055B - Commercial Kitchen	Fair	Commercial Kitchen Line, Serving/Warming Equipment	4 LF	4	10302308
E1030	1055B - Commercial Kitchen	Fair	Foodservice Equipment, Sink, 1-Bowl	1	10	10302287
E1030	1055B - Commercial Kitchen	Fair	Commercial Kitchen Line, Serving/Warming Equipment	1 LF	3	10302382
E1030	1055B - Commercial Kitchen	Fair	Foodservice Equipment, Exhaust Hood, 8 to 10 LF	1	3	10302293
E1030	1055B - Commercial Kitchen	Fair	Foodservice Equipment, Refrigerator, 1-Door Reach-In	1	3	10302416
E1030	1055B - Commercial Kitchen	Fair	Foodservice Equipment, Sink, 1-Bowl	1	10	10302359
E1030	1055B - Commercial Kitchen	Fair	Commercial Kitchen Line, Serving/Warming Equipment	3 LF	11	10302420
E1030	3012 Food Science	Fair	Foodservice Equipment, Refrigerator, 1-Door Reach-In	1	11	10304653
E1030	1055B - Commercial Kitchen	Fair	Foodservice Equipment, Refrigerator, 1-Door Reach-In	1	9	10302323
E1030	1055B - Commercial Kitchen	Fair	Commercial Kitchen Line, Serving/Warming Equipment	5 LF	4	10302403
E1030	1055B - Commercial Kitchen	Fair	Commercial Kitchen Line, Serving/Warming Equipment	3 LF	3	10302418
E1030	1055B - Commercial Kitchen	Fair	Foodservice Equipment, Food Warmer, Proofing Cabinet on Wheels	1	3	10302446
E1030	1055B - Commercial Kitchen	Fair	Foodservice Equipment, Exhaust Hood, 8 to 10 LF	1	3	10302306
E1030	1055B - Commercial Kitchen	Fair	Foodservice Equipment, Range, 2-Burner	1	3	10302366
E1030	1055B - Commercial Kitchen	Fair	Commercial Kitchen Line, Serving/Warming Equipment	3 LF	3	10302390
E1030	1055B - Commercial Kitchen	Fair	Foodservice Equipment, Steamer, Freestanding	1	4	10302421
E1030	1055B - Commercial Kitchen	Fair	Foodservice Equipment, Refrigerator, 1-Door Reach-In	1	6	10302387
E1030	1055B - Commercial Kitchen	Fair	Commercial Kitchen Line, Preparation Tables/Areas	6 LF	7	10302289
E1030	1055B - Commercial Kitchen (Refrigerator)	Fair	Foodservice Equipment, Walk-In, Refrigerator	1	4	10302360
E1030	1055B - Commercial Kitchen	Fair	Foodservice Equipment, Sink, 1-Bowl	1	10	10302335
E1030	1055B - Commercial Kitchen (Freezer)	Fair	Foodservice Equipment, Walk-In, Evaporator for Refigerator/Freezer	1	4	10302380
E1030	Commercial Kitchen	Fair	Foodservice Equipment, Walk-In, Condenser for Refigerator/Freezer	1	4	10429862
E1030	1055B - Commercial Kitchen	Fair	Foodservice Equipment, Steamer, Freestanding	1	5	10302304
E1030	1055B - Commercial Kitchen	Fair	Commercial Kitchen Line, Serving/Warming Equipment	6 LF	3	10302312

Component Condition Report | Rockville High School / Main Building

UF L3 Code	Location	Condition	Component/Attributes/Capacity	Quantity	RUL	ID
E1030	Greenhouse	Fair	Commercial Kitchen Line, Preparation Tables/Areas	24 LF	9	10304763
E1030	1055B - Commercial Kitchen	Fair	Commercial Kitchen Line, Serving/Warming Equipment	3 LF	3	10302331
E1030	1055B - Commercial Kitchen	Good	Foodservice Equipment, Refrigerator, 1-Door Reach-In	1	15	10302397
E1030	1055B - Commercial Kitchen	Fair	Commercial Kitchen Line, Preparation Tables/Areas	6 LF	4	10302377
E1030	1055B - Commercial Kitchen	Fair	Commercial Kitchen Line, Serving/Warming Equipment	3 LF	4	10302391
E1030	1055B - Commercial Kitchen	Fair	Foodservice Equipment, Walk-In, Freezer	1	3	10302340
E1030	1055B - Commercial Kitchen (Refrigerator)	Fair	Foodservice Equipment, Walk-In, Evaporator for Refrigerator/Freezer	1	4	10302362
E1030	3012	Fair	Foodservice Equipment, Food Warmer, Proofing Cabinet on Wheels	1	5	10302408
E1030	1055B - Commercial Kitchen	Fair	Commercial Kitchen Line, Serving/Warming Equipment	4 LF	5	10302415
E1030	1055B - Commercial Kitchen	Fair	Commercial Kitchen Line, Serving/Warming Equipment	4 LF	9	10302430
E1030	1055B - Commercial Kitchen	Fair	Commercial Kitchen Line, Preparation Tables/Areas	6 LF	4	10302429
E1030	1055B - Commercial Kitchen	Fair	Commercial Kitchen Line, Serving/Warming Equipment	5 LF	5	10302316
E1030	3012	Fair	Foodservice Equipment, Refrigerator, 2-Door Reach-In	1	4	10302454
E1030	1055B - Commercial Kitchen	Fair	Foodservice Equipment, Sink, 1-Bowl	1	10	10302417
E1030	1055B - Commercial Kitchen	Fair	Foodservice Equipment, Food Warmer, Proofing Cabinet on Wheels	1	9	10302327
E1030	Commercial Kitchen	Fair	Foodservice Equipment, Walk-In, Condenser for Refrigerator/Freezer	1	4	10429804
E1030	1055B - Commercial Kitchen	Good	Foodservice Equipment, Ice maker, Freestanding	1	13	10302405
E1030	1076 - Auditorium	Fair	Foodservice Equipment, Trash Compactor, 600 LB	1	3	10302440
E1030	1055B - Commercial Kitchen	Fair	Commercial Kitchen Line, Serving/Warming Equipment	3 LF	3	10302435
E1030	1055B - Commercial Kitchen	Fair	Foodservice Equipment, Convection Oven, Double	1	3	10302423
E1030	1055B - Commercial Kitchen	Fair	Commercial Kitchen Line, Serving/Warming Equipment	6 LF	5	10302375
E1030	1055B - Commercial Kitchen	Fair	Foodservice Equipment, Refrigerator, 1-Door Reach-In	1	4	10302336
E1030	1055B - Commercial Kitchen	Fair	Foodservice Equipment, Exhaust Hood, 8 to 10 LF	1	4	10302447
E1030	1055B - Commercial Kitchen	Fair	Commercial Kitchen Line, Serving/Warming Equipment	3 LF	5	10302445

Component Condition Report | Rockville High School / Main Building

UF L3 Code	Location	Condition	Component/Attributes/Capacity	Quantity	RUL	ID
E1030	1055B - Commercial Kitchen	Fair	Foodservice Equipment, Food Warmer, Proofing Cabinet on Wheels	1	9	10302291
E1030	1055B - Commercial Kitchen	Fair	Foodservice Equipment, Convection Oven, Double	1	4	10302372
E1030	1055B - Commercial Kitchen	Fair	Foodservice Equipment, Food Warmer, Proofing Cabinet on Wheels	1	9	10302369
E1030	1055B - Commercial Kitchen	Fair	Foodservice Equipment, Commercial Kitchen, 3-Bowl	1	10	10302404
E1030	1055B - Commercial Kitchen	Fair	Foodservice Equipment, Sink, 2-Bowl	1	10	10302428
E1030	1055B - Commercial Kitchen	Fair	Commercial Kitchen Line, Serving/Warming Equipment	1 LF	5	10302427
E1030	1055B - Commercial Kitchen	Fair	Commercial Kitchen Line, Serving/Warming Equipment	1 LF	5	10302436
E1030	3012 Food Science	Fair	Foodservice Equipment, Refrigerator, 1-Door Reach-In	1	5	10304708
E1030	1055B - Commercial Kitchen	Fair	Commercial Kitchen Line, Preparation Tables/Areas	10 LF	7	10302448
E1030	1055B - Commercial Kitchen	Fair	Commercial Kitchen Line, Serving/Warming Equipment	1 LF	5	10302453
E1030	3012 Food Science	Fair	Foodservice Equipment, Refrigerator, 2-Door Reach-In	1	5	10304639
E1030	1055B - Commercial Kitchen	Fair	Commercial Kitchen Line, Serving/Warming Equipment	1 LF	5	10302330
E1040	1095C - Art Storage	Fair	Ceramics Equipment, Kiln	1	2	10302396
E1040	Science Prep	Fair	Laboratory Equipment, Exhaust Hood, Variable Volume 4 LF, 4 LF	5	9	10304594
E1040	Classrooms Science	Fair	Laboratory Equipment, Exhaust Hood, Variable Volume 4 LF, 4 LF	9	9	10304733
E1040	Science Prep	Fair	Laboratory Equipment, Sink, 1-Bowl	14	9	10304766
E1040	1095C - Art Storage	Fair	Ceramics Equipment, Kiln	1	3	10302356
E1040	Classrooms Science	Fair	Laboratory Equipment, Sink, 1-Bowl	81	9	10304771
E1040	1095C - Art Storage	Fair	Ceramics Equipment, Kiln	1	4	10302332
E1070	2nd Floor Gymnasium	Fair	Basketball Backboard, Ceiling-Mounted, Operable	6	9	10304699
E2010	Library	Fair	Library Shelving, Single-Faced, up to 90" Height	120 LF	9	10304663
E2010	Library	Fair	Library Shelving, Double-Faced, up to 90" Height	260 LF	8	10304686
E2010	Throughout Building	Fair	Library Shelving, Single-Faced, up to 90" Height, up to 90" Height	60 LF	5	10302409
E2010	1076 - Auditorium	Fair	Fixed Seating, Auditorium/Theater, Metal Cushioned Standard	400	6	10302339

Component Condition Report | Rockville High School / Main Building

UF L3 Code	Location	Condition	Component/Attributes/Capacity	Quantity	RUL	ID
E2010	1097 - Gymnasium	Fair	Bleachers, Telescoping Manual, up to 15 Tier (per Seat)	450	5	10302345
E2010	Throughout Building	Fair	Library Shelving, Double-Faced, up to 90" Height	140 LF	16	10302365
E2010	Throughout Building	Fair	Casework, Cabinetry, Economy	2,650 LF	5	10302322
E2010	Science Prep	Fair	Casework, Cabinetry, High-End or Laboratory	175 LF	7	10304666
E2010	Classrooms Science	Fair	Casework, Cabinetry, High-End or Laboratory	720 LF	9	10304588

Athletic, Recreational & Playfield Areas

G2050	1097 - Gymnasium	Fair	Sports Apparatus, Scoreboard, Electronic Standard	1	5	10302348
-------	------------------	------	---	---	---	----------

Sitework

G2060	Building Exterior	Fair	Signage, Property, Building-Mounted Individual Letters, Replace/Install	20	8	10304583
G2080	Boiler room	Fair	Irrigation System, Control Panel	1	3	10302288
G4050	Building Exterior	Fair	Site Lighting, Wall Pack or Walkway Pole-Mounted, any type w/ LED, 20 WATT	18	3	10302468

Component Condition Report | Rockville High School / Site

UF L3 Code	Location	Condition	Component/Attributes/Capacity	Quantity	RUL	ID
Plumbing						
D2010	Stadium Snack Bar	Fair	Water Heater, Electric, Residential, 30 GAL	1	3	10304579
HVAC						
D3020	Stadium Snack Bar	Fair	Unit Heater, Electric, 11 - 20 KW	1	6	10304530
Electrical						
D5020	Stadium Snack Bar	Fair	Distribution Panel, 120/208 V, 400 AMP [OC]	1	9	10304536
D5020	Stadium Snack Bar	Fair	Distribution Panel, 120/208 V, 400 AMP [OC]	1	9	10304582
D5020	Stadium Snack Bar	Fair	Secondary Transformer, Dry, Stepdown, 15 KVA [T-KEX]	1	9	10304541
D5020	Stadium Snack Bar	Fair	Secondary Transformer, Dry, Stepdown, 112.5 KVA [T-OC]	1	9	10304547
D5020	Stadium Snack Bar	Fair	Distribution Panel, 277/480 V, 400 AMP [SLS]	1	9	10304533

Component Condition Report | Rockville High School / Site

UF L3 Code	Location	Condition	Component/Attributes/Capacity	Quantity	RUL	ID
Equipment & Furnishings						
E1070	1097 - Gymnasium	Fair	Basketball Backboard, Ceiling-Mounted, Operable, Operable	8	10	10302344
E2010	Site Sports Fields & Courts	Fair	Bleachers, Fixed Steel Frame, Aluminum Benches (per Seat)	1,600	9	10304575
E2010	Site Sports Fields & Courts	Fair	Bleachers, Fixed Steel Frame, Aluminum Benches (per Seat)	250	5	10304534
Special Construction & Demo						
F1020	Site General	Fair	Shed/Gazebo/Shade Structure, Wood or Metal-Framed, Standard	240 SF	9	10304555
F1020	Building Exterior	Fair	Ancillary Building, Greenhouse, Truss Frame w/ Plastic Walls & Roof	1,000 SF	10	10302286
F1020	Stadium Snack Bar	Fair	Ancillary Building, Wood-Framed or CMU, Standard	1,500 SF	15	10304584
F1020	Site General	Fair	Ancillary Building, Wood-Framed or CMU, Standard	170 SF	15	10304531
F1020	Site Sports Fields & Courts	Fair	Ancillary Building, Steel, Pre-Engineered	200 SF	15	10304563
Pedestrian Plazas & Walkways						
G2020	Site Parking	Fair	Parking Lots, Pavement, Asphalt, Mill & Overlay	187,250 SF	6	10304561
G2020	Site Parking	Fair	Parking Lots, Curb & Gutter, Concrete	4,500 LF	29	10304537
G2020	Site Parking	Fair	Parking Lots, Pavement, Asphalt, Seal & Stripe	187,250 SF	3	10304529
G2020	Site Parking Areas	Failed	Parking Lots, Pavement, Asphalt, Cut & Patch	200 SF	0	10304542
G2030	Site General	Fair	Sidewalk, Brick/Masonry Pavers	1,000 SF	9	10304564
G2030	Site General	Fair	Sidewalk, Concrete, Large Areas	55,000 SF	29	10304565
Athletic, Recreational & Playfield Areas						
G2050	Site Playground	Fair	Play Structure, Multipurpose, Small	1	8	10304556
G2050	Site Sports Fields & Courts	Good	Athletic Surfaces & Courts, Tennis/Volleyball, 2-Color Surface, Seal & Stripe	30,625 SF	7	10304572
G2050	Site Sports Fields & Courts	Fair	Sports Apparatus, Scoreboard, Electronic Basic	2	8	10304539
G2050	Site	Fair	Sports Apparatus, Baseball, Batting Cage	1	9	10302432
G2050	Site Sports Fields & Courts	Fair	Sports Apparatus, Basketball, Backboard/Rim/Pole	4	7	10304528
G2050	Site Sports Fields & Courts	Good	Sports Apparatus, Tennis/Volleyball, Net w/ Posts & Anchors	6	18	10304532
G2050	Site Sports Fields & Courts	Good	Athletic Surfaces & Courts, Basketball/General, Asphalt Pavement, Mill & Overlay	6,500 SF	23	10304580

Component Condition Report | Rockville High School / Site

UF L3 Code	Location	Condition	Component/Attributes/Capacity	Quantity	RUL	ID
G2050	Site Sports Fields & Courts	Fair	Sports Site Lighting, Stadium, Clustered	1	29	10304544
G2050	Site Sports Fields & Courts	Fair	Sports Apparatus, Baseball, Backstop Chain-Link	1	11	10304553
G2050	Site Sports Fields & Courts	Good	Athletic Surfaces & Courts, Track Surface, Rubber	31,500 SF	8	10387736
G2050	Site Sports Fields & Courts	Fair	Sports Apparatus, Baseball, Batting Cage	1	8	10304569
G2050	Site Sports Fields & Courts	Good	Athletic Surfaces & Courts, Basketball/General, Asphalt Pavement, Seal & Stripe	6,500 SF	4	10304545
G2050	Site Playgrounds	Fair	Athletic Surfaces & Courts, Basketball/General, Asphalt Pavement, Mill & Overlay	1,500 SF	6	10304560
G2050	Site Sports Fields & Courts	Fair	Sports Apparatus, Player/Dugout Benches, 12' Length	2	6	10304527
G2050	Site Sports Fields & Courts	Fair	Sports Apparatus, Football, Goal Post	2	7	10304568
G2050	Site Sports Fields & Courts	Fair	Sports Apparatus, Scoreboard, Electronic Standard	1	5	10304543
Sitework						
G2060	Site General	Good	Signage, Property, Pylon Robust/Electronic Programmable, Replace/Install	1	16	10304573
G2060	Site General	Fair	Retaining Wall, Concrete Masonry Unit (CMU)	3,600 SF	19	10304540
G2060	Site General	Fair	Fences & Gates, Fence, Chain Link 8'	1,000 LF	19	10304535
G2060	Site General	Fair	Retaining Wall, Concrete Masonry Unit (CMU)	500 SF	19	10304554
G2060	Site General	Fair	Retaining Wall, Concrete Masonry Unit (CMU)	2,000 SF	19	10304574
G2060	Site General	Fair	Bike Rack, Fixed 1-5 Bikes	1	9	10304548
G2060	Site General	Fair	Flagpole, Metal	1	9	10304558
G2060	Site General	Good	Park Bench, Wood/Composite/Fiberglass	6	15	10304526
G2060	Site General rear	Fair	Fences & Gates, Fence, Chain Link 6'	1,500 LF	19	10304571
G2060	Site General	Fair	Park Bench, Metal Powder-Coated	2	9	10304552
G2060	Site General	Fair	Fences & Gates, Fence, Chain Link 4'	1,600 LF	19	10304581
G4050	Site Parking Areas	Excellent	Pole Light Fixture w/ Lamps, any type 20' High, w/ LED Replacement, 150 WATT, Replace/Install	31	20	10304567

Appendix F:

Replacement Reserves

Replacement Reserves Report



5/20/2026

Location	2025	2026	2027	2028	2029	2030	2031	2032	2033	2034	2035	2036	2037	2038	2039	2040	2041	2042	2043	2044	2045	Total Escalated Estimate	
Rockville High School	\$0	\$0	\$0	\$0	\$0	\$0	\$0	\$0	\$0	\$0	\$0	\$0	\$0	\$0	\$0	\$0	\$0	\$0	\$0	\$0	\$0	\$0	
Rockville High School / Main Building	\$17,840	\$5,665	\$195,497	\$2,069,767	\$232,012	\$2,992,292	\$2,137,121	\$1,081,244	\$2,185,645	\$7,085,468	\$1,654,280	\$186,743	\$0	\$61,649	\$33,247	\$2,200,551	\$483,378	\$1,313,353	\$4,022,883	\$10,004,261	\$4,497,173		\$42,460,070
Rockville High School / Site	\$1,100	\$0	\$0	\$93,059	\$3,292	\$44,052	\$794,194	\$92,164	\$328,426	\$375,807	\$131,220	\$6,921	\$0	\$123,742	\$4,424	\$275,137	\$40,118	\$75,928	\$427,417	\$818,405	\$223,958		\$3,859,365
Grand Total	\$18,940	\$5,665	\$195,497	\$2,162,826	\$235,304	\$3,036,345	\$2,931,315	\$1,173,407	\$2,514,071	\$7,461,275	\$1,785,500	\$193,665	\$0	\$185,391	\$37,671	\$2,475,688	\$523,496	\$1,389,280	\$4,450,300	\$10,822,667	\$4,721,131		\$46,319,435

Rockville High School

Rockville High School / Main Building

Uniformat Code	Location Description	ID	Cost Description	Lifespan (EUL)	EAge	RUL	Quantity	Unit	Unit Cost*	Subtotal	2025	2026	2027	2028	2029	2030	2031	2032	2033	2034	2035	2036	2037	2038	2039	2040	2041	2042	2043	2044	2045	Deficiency Repair Estimate		
B1020	1097 - Gymnasium	10302406	Roof Structure, Flat, Metal Deck Over Bar Joists, Replace	75	66	9	6000	SF	\$28.00	\$168,000																					\$168,000	\$168,000		
B2010	Building Exterior	10304798	Exterior Walls, Concrete, Clean & Seal, Maintain	20	9	11	53284	SF	\$1.54	\$82,057																						\$82,057	\$82,057	
B2020	Building Exterior	10304570	Glazing, any type by SF, Replace	30	21	9	5000	SF	\$55.00	\$275,000																\$275,000						\$275,000	\$275,000	
B2050	Building Exterior	10429847	Exterior Door, Steel, Standard, Replace	30	21	9	3	EA	\$600.00	\$1,800																\$1,800						\$1,800	\$1,800	
B2050	Building Exterior	10304562	Exterior Door, Steel, Standard, Replace	30	21	9	10	EA	\$600.00	\$6,000																\$6,000						\$6,000	\$6,000	
B2050	Building Exterior	10304538	Exterior Door, Steel, Commercial, Replace	40	21	19	30	EA	\$4,060.00	\$121,800																			\$121,800			\$121,800	\$121,800	
B2050	Building Exterior	10304576	Overhead/Dock Door, Steel, 12'x12' (144 SF), Replace	30	21	9	1	EA	\$3,200.00	\$3,200																\$3,200						\$3,200	\$3,200	
B2050	Building Exterior	10304550	Overhead/Dock Door, Steel, 12'x12' (144 SF), Replace	30	21	9	1	EA	\$3,200.00	\$3,200																\$3,200						\$3,200	\$3,200	
B3010	Roof	10429882	Roofing, Built-Up, Replace	25	7	18	162530	SF	\$14.00	\$2,275,420																			\$2,275,420			\$2,275,420	\$2,275,420	
B3020	Roof	10429814	Roof Appurtenances, Roof Access Ladder, Steel, Replace	40	20	20	145	LF	\$90.00	\$13,050																				\$13,050		\$13,050	\$13,050	
B3060	Roof	10429822	Roof Hatch, Metal, Replace	30	20	10	2	EA	\$1,300.00	\$2,600																\$2,600						\$2,600	\$2,600	
C1010	2nd Floor Gymnasium	10304679	Interior Construction, any type, Repairs per Man-Day, Repair	0	-1	1	5	EA	\$1,100.00	\$5,500		\$5,500																				\$5,500	\$5,500	
C1010	1054 - Cafeteria	10302347	Interior Wall, Gypsum Board/Plaster, Replace	50	48	2	4000	SF	\$3.50	\$14,000			\$14,000																			\$14,000	\$14,000	
C1010	2nd Floor Gymnasium	10304619	Movable Partition, Gym Divider, Deluxe/Operable, Replace	25	26	0	800	SF	\$22.30	\$17,840	\$17,840																						\$17,840	\$17,840
C1010	1097 - Gymnasium	10302321	Movable Partition, Gym Divider, Deluxe/Operable, Replace	25	23	2	4000	SF	\$22.30	\$89,200			\$89,200																			\$89,200	\$89,200	
C1010	Greenhouse	10304713	Movable Partition, Gym Divider, Deluxe/Operable, Replace	25	19	6	600	SF	\$22.30	\$13,380							\$13,380															\$13,380	\$13,380	
C1030	Throughout Building	10304726	Interior Door, Steel, Standard, Replace	40	21	19	18	EA	\$600.00	\$10,800																				\$10,800		\$10,800	\$10,800	
C1030	Throughout Building	10304750	Interior Door, Wood, Solid-Core, Replace	40	21	19	214	EA	\$700.00	\$149,800																				\$149,800		\$149,800	\$149,800	
C1030	Throughout Building	10302384	Interior Door, Wood, Solid-Core, Replace	40	20	20	46	EA	\$700.00	\$32,200																					\$32,200		\$32,200	\$32,200
C1070	Throughout Building	10401859	Suspended Ceilings, Acoustical Tile (ACT), Replace	25	5	20	265000	SF	\$3.50	\$927,500																					\$927,500	\$927,500	\$927,500	
C1090	2nd Floor Gym Restroom	10304613	Toilet Partitions, Plastic/Laminate, Replace	20	13	7	3	EA	\$750.00	\$2,250								\$2,250														\$2,250	\$2,250	
C1090	Women's Locker Room 2125	10304656	Toilet Partitions, Plastic/Laminate, Replace	20	12	8	5	EA	\$750.00	\$3,750								\$3,750														\$3,750	\$3,750	
C1090	Special Needs	10304627	Toilet Partitions, Plastic/Laminate, Replace	20	9	11	5	EA	\$750.00	\$3,750											\$3,750											\$3,750	\$3,750	
C1090	Restrooms 2nd Floor	10304701	Toilet Partitions, Plastic/Laminate, Replace	20	9	11	12	EA	\$750.00	\$9,000											\$9,000											\$9,000	\$9,000	
C1090	Gang restrooms	10302355	Toilet Partitions, Plastic/Laminate, Replace	20	7	13	36	EA	\$750.00	\$27,000													\$27,000									\$27,000	\$27,000	
C1090	Restrooms 3rd Floor	10304786	Toilet Partitions, Plastic/Laminate, Replace	20	4	16	12	EA	\$750.00	\$9,000																		\$9,000				\$9,000	\$9,000	
C1090	Women's Locker Room 2125	10304742	Locker Rooms, Steel-Baked Enamel, 12" W x 15" D x 72" H, Replace	20	12	8	700	LF	\$500.00	\$350,000								\$350,000														\$350,000	\$350,000	
C1090	Throughout Building	10302354	Lockers, Steel-Baked Enamel, 12" W x 15" D x 72" H, Replace	20	5	15	2500	LF	\$500.00	\$1,250,000																	\$1,250,000					\$1,250,000	\$1,250,000	
C2010	Throughout Building	10304741	Wall Finishes, Ceramic Tile, Replace	40	21	19	12000	SF	\$18.00	\$216,000																				\$216,000		\$216,000	\$216,000	
C2010	2nd Floor Gymnasium	10304642	Wall Finishes, Gym Wall Pads, Secured and 1.5" Thick, Replace	15	5	10	800	SF	\$16.80	\$13,440											\$13,440											\$13,440	\$13,440	
C2010	Throughout Building	10304784	Wall Finishes, any surface, Prep & Paint	10	3	7	500000	SF	\$1.50	\$750,000								\$750,000										\$750,000				\$750,000	\$1,500,000	
C2010	Throughout Building	10304791	Wall Finishes, Acoustical Tile (ACT), Fabric-Faced, Replace	25	16	9	8500	SF	\$14.00	\$119,000										\$119,000												\$119,000	\$119,000	
C2030	Throughout Building	10302361	Flooring, any surface, w/ Paint or Sealant, Prep & Paint	10	3	7	10000	SF	\$1.50	\$15,000									\$15,000									\$15,000				\$15,000	\$30,000	
C2030	Throughout Building	10304616	Flooring, Ceramic Tile, Replace	40	21	19	7000	SF	\$18.00	\$126,000																				\$126,000		\$126,000	\$126,000	
C2030	Weight Room	10302442	Flooring, Rubber Tile, Replace	15	11	4	1500	SF	\$9.00	\$13,500							\$13,500												\$13,500		\$13,500	\$27,000		
C2030	Throughout Building	10304645	Flooring, Vinyl Tile (VCT), Replace	15	9	6	260000	SF	\$5.00	\$1,300,000								\$1,300,000														\$1,300,000	\$1,300,000	
C2030	Throughout Building	10304591	Flooring, Rubber Tile, Replace	15	6	9	3500	SF	\$9.00	\$31,500										\$31,500												\$31,500	\$31,500	
C2030	Office Areas	10304729	Flooring, Carpet, Commercial Tile, Replace	10	3	7	2000	SF	\$6.50	\$13,000									\$13,000									\$13,000				\$13,000	\$26,000	
C2030	Throughout Building	10304765	Flooring, Carpet, Commercial Standard, Replace	10	2	8	9000	SF	\$7.50	\$67,500																			\$67,500			\$67,500	\$135,000	
C2030	Throughout Building	10304667	Flooring, Wood, Sports, Refinish	10	5	5	15000	SF	\$5.00	\$75,000																				\$75,000		\$75,000	\$150,000	

Replacement Reserves Report



5/20/2026

Uniformat Code	Location Description	ID	Cost Description	Lifespan (EUL)	EAge	RUL	Quantity	Unit	Unit Cost*	Subtotal	2025	2026	2027	2028	2029	2030	2031	2032	2033	2034	2035	2036	2037	2038	2039	2040	2041	2042	2043	2044	2045	Deficiency Repair Estimate
D5040	Building Exterior	10304559	Exterior Light, any type, w/ LED Replacement, Replace	20	0	20	6	EA	\$800.00	\$4,800																				\$4,800	\$4,800	
D6030	Projection Booth Room 2073	10304641	Sound System, Theater/Auditorium/Church, Replace	20	15	5	7500	SF	\$1.50	\$11,250						\$11,250																\$11,250
D6060	Throughout Building	10304696	Intercom/PA System, Public Address Upgrade, Facility-Wide, Replace	20	12	8	317731	SF	\$1.65	\$524,256									\$524,256													\$524,256
D7030	Throughout Building	10304743	Security/Surveillance System, Full System Upgrade, Average Density, Replace	15	7	8	317731	SF	\$2.00	\$635,462									\$635,462													\$635,462
D7050	Boiler Room	10302414	Fire Alarm Panel, Fully Addressable, Replace	15	11	4	1	EA	\$15,000.00	\$15,000					\$15,000														\$15,000			\$30,000
D7050	Throughout Building	10304688	Fire Alarm System, Full System Upgrade, Standard Addressable, Upgrade/Install	20	11	9	317731	SF	\$3.00	\$953,193									\$953,193													\$953,193
D8010	Throughout Building	10304668	BAS/HVAC Controls, Basic System or Legacy Upgrades, Upgrade/Install	15	10	5	317731	SF	\$2.50	\$794,328						\$794,328														\$794,328		\$1,588,655
E1030	1055B - Commercial Kitchen	10302450	Commercial Kitchen Line, Serving/Warming Equipment, Replace	20	17	3	1	LF	\$1,000.00	\$1,000				\$1,000																		\$1,000
E1030	1055B - Commercial Kitchen	10302382	Commercial Kitchen Line, Serving/Warming Equipment, Replace	20	17	3	1	LF	\$1,000.00	\$1,000				\$1,000																		\$1,000
E1030	1055B - Commercial Kitchen	10302293	Foodservice Equipment, Exhaust Hood, 8 to 10 LF, Replace	15	12	3	1	EA	\$4,500.00	\$4,500				\$4,500														\$4,500				\$9,000
E1030	1055B - Commercial Kitchen	10302416	Foodservice Equipment, Refrigerator, 1-Door Reach-In, Replace	15	12	3	1	EA	\$2,700.00	\$2,700				\$2,700														\$2,700				\$5,400
E1030	1055B - Commercial Kitchen	10302418	Commercial Kitchen Line, Serving/Warming Equipment, Replace	20	17	3	3	LF	\$1,000.00	\$3,000				\$3,000																		\$3,000
E1030	1055B - Commercial Kitchen	10302446	Foodservice Equipment, Food Warmer, Proofing Cabinet on Wheels, Replace	15	12	3	1	EA	\$1,700.00	\$1,700				\$1,700														\$1,700				\$3,400
E1030	1055B - Commercial Kitchen	10302306	Foodservice Equipment, Exhaust Hood, 8 to 10 LF, Replace	15	12	3	1	EA	\$4,500.00	\$4,500				\$4,500														\$4,500				\$9,000
E1030	1055B - Commercial Kitchen	10302366	Foodservice Equipment, Range, 2-Burner, Replace	15	12	3	1	EA	\$1,700.00	\$1,700				\$1,700														\$1,700				\$3,400
E1030	1055B - Commercial Kitchen	10302390	Commercial Kitchen Line, Serving/Warming Equipment, Replace	20	17	3	3	LF	\$1,250.00	\$3,750				\$3,750																		\$3,750
E1030	1055B - Commercial Kitchen	10302312	Commercial Kitchen Line, Serving/Warming Equipment, Replace	20	17	3	6	LF	\$1,000.00	\$6,000				\$6,000																		\$6,000
E1030	1055B - Commercial Kitchen	10302331	Commercial Kitchen Line, Serving/Warming Equipment, Replace	20	17	3	3	LF	\$1,000.00	\$3,000				\$3,000																		\$3,000
E1030	1055B - Commercial Kitchen	10302340	Foodservice Equipment, Walk-In, Freezer, Replace	20	17	3	1	EA	\$25,000.00	\$25,000				\$25,000																		\$25,000
E1030	1076 - Auditorium	10302440	Foodservice Equipment, Trash Compactor, 600 LB, Replace	20	17	3	1	EA	\$13,000.00	\$13,000				\$13,000																		\$13,000
E1030	1055B - Commercial Kitchen	10302435	Commercial Kitchen Line, Serving/Warming Equipment, Replace	20	17	3	3	LF	\$1,000.00	\$3,000				\$3,000																		\$3,000
E1030	1055B - Commercial Kitchen	10302423	Foodservice Equipment, Convection Oven, Double, Replace	10	7	3	1	EA	\$8,280.00	\$8,280				\$8,280										\$8,280								\$16,560
E1030	1055B - Commercial Kitchen	10302352	Commercial Kitchen Line, Preparation Tables/Areas, Replace	20	16	4	8	LF	\$300.00	\$2,400				\$2,400																		\$2,400
E1030	1055B - Commercial Kitchen	10302308	Commercial Kitchen Line, Serving/Warming Equipment, Replace	20	16	4	4	LF	\$1,250.00	\$5,000				\$5,000																		\$5,000
E1030	1055B - Commercial Kitchen	10302403	Commercial Kitchen Line, Serving/Warming Equipment, Replace	20	16	4	5	LF	\$1,000.00	\$5,000				\$5,000																		\$5,000
E1030	1055B - Commercial Kitchen	10302421	Foodservice Equipment, Steamer, Freestanding, Replace	10	6	4	1	EA	\$10,500.00	\$10,500				\$10,500										\$10,500								\$21,000
E1030	1055B - Commercial Kitchen (Refrigerator)	10302360	Foodservice Equipment, Walk-In, Refrigerator, Replace	20	16	4	1	EA	\$15,000.00	\$15,000				\$15,000																		\$15,000
E1030	1055B - Commercial Kitchen (Freezer)	10302380	Foodservice Equipment, Walk-In, Evaporator for Refrigerator/Freezer, Replace	15	11	4	1	EA	\$4,600.00	\$4,600				\$4,600															\$4,600			\$9,200
E1030	Commercial Kitchen	10429862	Foodservice Equipment, Walk-In, Condenser for Refrigerator/Freezer, Replace	15	11	4	1	EA	\$6,300.00	\$6,300				\$6,300															\$6,300			\$12,600
E1030	1055B - Commercial Kitchen	10302377	Commercial Kitchen Line, Preparation Tables/Areas, Replace	20	16	4	6	LF	\$300.00	\$1,800				\$1,800																		\$1,800
E1030	1055B - Commercial Kitchen	10302391	Commercial Kitchen Line, Serving/Warming Equipment, Replace	20	16	4	3	LF	\$1,000.00	\$3,000				\$3,000																		\$3,000
E1030	1055B - Commercial Kitchen (Refrigerator)	10302362	Foodservice Equipment, Walk-In, Evaporator for Refrigerator/Freezer, Replace	15	11	4	1	EA	\$4,600.00	\$4,600				\$4,600															\$4,600			\$9,200
E1030	1055B - Commercial Kitchen	10302429	Commercial Kitchen Line, Preparation Tables/Areas, Replace	20	16	4	6	LF	\$300.00	\$1,800				\$1,800																		\$1,800
E1030	3012	10302454	Foodservice Equipment, Refrigerator, 2-Door Reach-In, Replace	15	11	4	1	EA	\$4,600.00	\$4,600				\$4,600															\$4,600			\$9,200
E1030	Commercial Kitchen	10429804	Foodservice Equipment, Walk-In, Condenser for Refrigerator/Freezer, Replace	15	11	4	1	EA	\$6,300.00	\$6,300				\$6,300															\$6,300			\$12,600
E1030	1055B - Commercial Kitchen	10302336	Foodservice Equipment, Refrigerator, 1-Door Reach-In, Replace	15	11	4	1	EA	\$2,700.00	\$2,700				\$2,700															\$2,700			\$5,400
E1030	1055B - Commercial Kitchen	10302447	Foodservice Equipment, Exhaust Hood, 8 to 10 LF, Replace	15	11	4	1	EA	\$4,500.00	\$4,500				\$4,500															\$4,500			\$9,000
E1030	1055B - Commercial Kitchen	10302372	Foodservice Equipment, Convection Oven, Double, Replace	10	6	4	1	EA	\$8,280.00	\$8,280				\$8,280											\$8,280							\$16,560
E1030	3012 Food Science	10304634	Foodservice Equipment, Refrigerator, 1-Door Reach-In, Replace	15	10	5	1	EA	\$2,700.00	\$2,700				\$2,700															\$2,700			\$5,400
E1030	1055B - Commercial Kitchen	10302304	Foodservice Equipment, Steamer, Freestanding, Replace	10	5	5	1	EA	\$10,500.00	\$10,500				\$10,500											\$10,500							\$21,000
E1030	3012	10302408	Foodservice Equipment, Food Warmer, Proofing Cabinet on Wheels, Replace	15	10	5	1	EA	\$1,700.00	\$1,700				\$1,700															\$1,700			\$3,400
E1030	1055B - Commercial Kitchen	10302415	Commercial Kitchen Line, Serving/Warming Equipment, Replace	20	15	5	4	LF	\$1,250.00	\$5,000				\$5,000																		\$5,000
E1030	1055B - Commercial Kitchen	10302316	Commercial Kitchen Line, Serving/Warming Equipment, Replace	20	15	5	5	LF	\$1,250.00	\$6,250				\$6,250																		\$6,250
E1030	1055B - Commercial Kitchen	10302375	Commercial Kitchen Line, Serving/Warming Equipment, Replace	20	15	5	6	LF	\$1,000.00	\$6,000				\$6,000																		\$6,000
E1030	1055B - Commercial Kitchen	10302445	Commercial Kitchen Line, Serving/Warming Equipment, Replace	20	15	5	3	LF	\$1,000.00	\$3,000				\$3,000																		\$3,000
E1030	1055B - Commercial Kitchen	10302427	Commercial Kitchen Line, Serving/Warming Equipment, Replace	20	15	5	1	LF	\$1,250.00	\$1,250				\$1,250																		\$1,250
E1030	1055B - Commercial Kitchen	10302436	Commercial Kitchen Line, Serving/Warming Equipment, Replace	20	15	5	1	LF	\$1,000.00	\$1,000				\$1,000																		\$1,000
E1030	3012 Food Science	10304708	Foodservice Equipment, Refrigerator, 1-Door Reach-In, Replace	15	10	5	1	EA	\$2,700.00	\$2,700				\$2,700																		

Replacement Reserves Report



5/20/2026

Uniformat Code	Location Description	ID	Cost Description	Lifespan (EUL)	EA	RUL	Quantity	Unit	Unit Cost*	Subtotal	2025	2026	2027	2028	2029	2030	2031	2032	2033	2034	2035	2036	2037	2038	2039	2040	2041	2042	2043	2044	2045	Deficiency Repair Estimate				
F1020	Site Sports Fields & Courts	10304563	Ancillary Building, Steel, Pre-Engineered, Replace	35	20	15	200	SF	\$30.00	\$6,000																					\$6,000	\$6,000				
G2020	Site Parking Areas	10304542	Parking Lots, Pavement, Asphalt, Cut & Patch	0	1	0	200	SF	\$5.50	\$1,100	\$1,100																					\$1,100				
G2020	Site Parking	10304529	Parking Lots, Pavement, Asphalt, Seal & Stripe	5	2	3	187250	SF	\$0.45	\$84,263				\$84,263					\$84,263					\$84,263								\$84,263	\$337,050			
G2020	Site Parking	10304561	Parking Lots, Pavement, Asphalt, Mill & Overlay	25	19	6	187250	SF	\$3.50	\$655,375						\$655,375																	\$655,375			
G2030	Site General	10304564	Sidewalk, Brick/Masonry Pavers, Replace	30	21	9	1000	SF	\$33.00	\$33,000									\$33,000														\$33,000			
G2050	Site Sports Fields & Courts	10304545	Athletic Surfaces & Courts, Basketball/General, Asphalt Pavement, Seal & Stripe	5	1	4	6500	SF	\$0.45	\$2,925					\$2,925				\$2,925					\$2,925							\$2,925		\$11,700			
G2050	Site Sports Fields & Courts	10304543	Sports Apparatus, Scoreboard, Electronic Standard, Replace	25	20	5	1	EA	\$8,000.00	\$8,000						\$8,000																	\$8,000			
G2050	Site Playgrounds	10304560	Athletic Surfaces & Courts, Basketball/General, Asphalt Pavement, Mill & Overlay	25	19	6	1500	SF	\$3.50	\$5,250							\$5,250																\$5,250			
G2050	Site Sports Fields & Courts	10304527	Sports Apparatus, Player/Dugout Benches, 12' Length, Replace	15	9	6	2	EA	\$450.00	\$900							\$900																\$900			
G2050	Site Sports Fields & Courts	10304572	Athletic Surfaces & Courts, Tennis/Volleyball, 2-Color Surface, Seal & Stripe	10	3	7	30625	SF	\$1.50	\$45,938								\$45,938														\$45,938	\$91,875			
G2050	Site Sports Fields & Courts	10304528	Sports Apparatus, Basketball, Backboard/Rim/Pole, Replace	25	18	7	4	EA	\$4,750.00	\$19,000								\$19,000															\$19,000			
G2050	Site Sports Fields & Courts	10304568	Sports Apparatus, Football, Goal Post, Replace	25	18	7	2	EA	\$5,000.00	\$10,000								\$10,000															\$10,000			
G2050	Site Sports Fields & Courts	10304539	Sports Apparatus, Scoreboard, Electronic Basic, Replace	25	17	8	2	EA	\$3,000.00	\$6,000									\$6,000															\$6,000		
G2050	Site Sports Fields & Courts	10387736	Athletic Surfaces & Courts, Track Surface, Rubber, Replace	10	2	8	31500	SF	\$5.00	\$157,500									\$157,500												\$157,500		\$315,000			
G2050	Site Sports Fields & Courts	10304569	Sports Apparatus, Baseball, Batting Cage, Replace	15	7	8	1	EA	\$1,500.00	\$1,500									\$1,500														\$1,500			
G2050	Site	10302432	Sports Apparatus, Baseball, Batting Cage, Replace	15	6	9	1	EA	\$1,500.00	\$1,500									\$1,500														\$1,500			
G2050	Site Sports Fields & Courts	10304553	Sports Apparatus, Baseball, Backstop Chain-Link, Replace	20	9	11	1	EA	\$5,000.00	\$5,000												\$5,000											\$5,000			
G2050	Site Sports Fields & Courts	10304532	Sports Apparatus, Tennis/Volleyball, Net w/ Posts & Anchors, Replace	20	2	18	6	EA	\$1,400.00	\$8,400																					\$8,400		\$8,400			
G2050	Site Playground	10304556	Play Structure, Multipurpose, Small, Replace	20	12	8	1	EA	\$10,000.00	\$10,000									\$10,000														\$10,000			
G2060	Site General	10304548	Bike Rack, Fixed 1-5 Bikes, Replace	20	11	9	1	EA	\$600.00	\$600										\$600													\$600			
G2060	Site General	10304552	Park Bench, Metal Powder-Coated, Replace	20	11	9	2	EA	\$2,100.00	\$4,200									\$4,200														\$4,200			
G2060	Site General	10304526	Park Bench, Wood/Composite/Fiberglass, Replace	20	5	15	6	EA	\$600.00	\$3,600																\$3,600							\$3,600			
G2060	Site General	10304535	Fences & Gates, Fence, Chain Link 8', Replace	40	21	19	1000	LF	\$37.50	\$37,500																					\$37,500		\$37,500			
G2060	Site General rear	10304571	Fences & Gates, Fence, Chain Link 6', Replace	40	21	19	1500	LF	\$21.00	\$31,500																					\$31,500		\$31,500			
G2060	Site General	10304581	Fences & Gates, Fence, Chain Link 4', Replace	40	21	19	1600	LF	\$18.00	\$28,800																					\$28,800		\$28,800			
G2060	Site General	10304558	Flagpole, Metal, Replace	30	21	9	1	EA	\$2,500.00	\$2,500									\$2,500														\$2,500			
G2060	Site General	10304573	Signage, Property, Pylon Robust/Electronic Programmable, Replace/Install	20	4	16	1	EA	\$25,000.00	\$25,000																	\$25,000						\$25,000			
G2060	Site General	10304540	Retaining Wall, Concrete Masonry Unit (CMU), Replace	40	21	19	3600	SF	\$60.00	\$216,000																				\$216,000		\$216,000				
G2060	Site General	10304554	Retaining Wall, Concrete Masonry Unit (CMU), Replace	40	21	19	500	SF	\$60.00	\$30,000																				\$30,000		\$30,000				
G2060	Site General	10304574	Retaining Wall, Concrete Masonry Unit (CMU), Replace	40	21	19	2000	SF	\$60.00	\$120,000																			\$120,000		\$120,000					
G4050	Site Parking Areas	10304567	Pole Light Fixture w/ Lamps, any type 20' High, w/ LED Replacement, Replace/Install	20	0	20	31	EA	\$4,000.00	\$124,000																				\$124,000		\$124,000				
Totals, Unescalated											\$1,100	\$0	\$0	\$85,163	\$2,925	\$38,000	\$665,125	\$74,938	\$259,263	\$288,025	\$97,640	\$5,000	\$0	\$84,263	\$2,925	\$176,600	\$25,000	\$45,938	\$251,063	\$466,725	\$124,000					\$2,693,690
Totals, Escalated (3.0% inflation, compounded annually)											\$1,100	\$0	\$0	\$93,059	\$3,292	\$44,052	\$794,194	\$92,164	\$328,426	\$375,807	\$131,220	\$6,921	\$0	\$123,742	\$4,424	\$275,137	\$40,118	\$75,928	\$427,417	\$818,405	\$223,958					\$3,859,365

* Markup has been included in unit costs.

Appendix G:

Equipment Inventory List

Index	ID	UFCODE	Component Description	Attributes	Capacity	Building	Location Detail	Manufacturer	Model	Serial	Dataplate Yr	Barcode	Qty
D10 Conveying													
1	10302350	D1010	Passenger Elevator	Hydraulic, 2 Floors, 1500 to 2500 LB		Rockville High School / Main Building	Elevator 1				2004		

Index	ID	UFCODE	Component Description	Attributes	Capacity	Building	Location Detail	Manufacturer	Model	Serial	Dataplate Yr	Barcode	Qty
D20 Plumbing													
1	10304579	D2010	Water Heater	Electric, Residential	30 GAL	Rockville High School / Site	Stadium Snack Bar	State Industries, Inc.	CPE3020MSA	E04210652	2004		
2	10302370	D2010	Water Heater	Gas, Commercial (200 MBH), 100 to 199 GAL	118 GAL	Rockville High School / Main Building	Boiler Room	State	SUF-119-500-NEA 300	2122124654796	2021		
3	10302343	D2010	Water Heater	Gas, Commercial (200 MBH), 100 to 199 GAL	130 GAL	Rockville High School / Main Building	Boiler Room	State	SUF130500NEA 104	1237M000133	2012		
4	10302305	D2010	Water Heater	Gas, Commercial (600 MBH), 200 to 300 GAL	400 GAL	Rockville High School / Main Building	Boiler Room	A.O. Smith	BTP400-1,000,000	SE03100349-3	2004		
5	10302367	D2060	Air Compressor	Tank-Style, 5 HP	3 HP	Rockville High School / Main Building	Boiler Room	Curtis-Toledo Inc	CVID96A8B3S3NSP	300141	2004		

Index	ID	UFCODE	Component Description	Attributes	Capacity	Building	Location Detail	Manufacturer	Model	Serial	Dataplate Yr	Barcode	Qty
D30 HVAC													
1	10302394	D3020	Boiler	Gas, HVAC, 5001 to 10000 MBH	7000 MBH	Rockville High School / Main Building	Boiler Room	Burnham	5PW-175-50-G-GP	695005	2004		
2	10302402	D3020	Boiler	Gas, HVAC, 5001 to 10000 MBH	7000 MBH	Rockville High School / Main Building	Boiler Room	Burnham	5PW-175-50-G-GP	695005	2004		
3	10302318	D3020	Unit Heater	Electric	3 kW	Rockville High School / Main Building	1076 - Auditorium	Inaccessible	Inaccessible	Inaccessible			
4	10304585	D3020	Unit Heater	Electric	6 - 10 kW	Rockville High School / Main Building	Greenhouse	Q-Mark	Inaccessible	Inaccessible			
5	10304530	D3020	Unit Heater	Electric	11 - 20 KW	Rockville High School / Site	Stadium Snack Bar				2004		
6	10304756	D3020	Unit Heater	Hydronic	11 - 20 MBH	Rockville High School / Main Building	Storage 2045				2004		
7	10302407	D3030	Chiller	Water-Cooled, 10 to 20 TON		Rockville High School / Main Building	Boiler Room	No dataplate	No dataplate	No dataplate			
8	10302290	D3030	Chiller	Water-Cooled, 401 to 500 TON	500 TON	Rockville High School / Main Building	Boiler Room		CVHE500	L03C03343	2004		
9	10302309	D3030	Chiller [CH-2]	Air-Cooled, 101 to 150 TON		Rockville High School / Main Building	Chiller Corral	Trane	RTAC 2004 UFPH	U03H01582	2004		
10	10302297	D3030	Cooling Tower	(Typical) Open Circuit, 101 to 200 TON	Inaccessible	Rockville High School / Main Building	Chiller Corral	Inaccessible	Inaccessible	Inaccessible	2004		
11	10429811	D3030	Ductless Mini-Split	Single Zone, Condenser & Evaporator, 1.5 to 2 TON	2 TON	Rockville High School / Main Building	Roof	Mitsubishi Electric	PUZ-A24NHA7	98U14065D	2019		

Index	ID	UFCode	Component Description	Attributes	Capacity	Building	Location Detail	Manufacturer	Model	Serial	Dataplate Yr	Barcode	Qty
12	10429825	D3030	Split System Ductless	Single Zone	2 TON	Rockville High School / Main Building	Roof	Mitsubishi Electric	PUY-A24NHA7	98U15547D	2019		
13	10302373	D3050	Pump	Distribution, HVAC Chilled or Condenser Water, 26 to 50 HP	30 HP	Rockville High School / Main Building	Boiler Room			CP3325-01 A30	2004		
14	10302299	D3050	Pump	Distribution, HVAC Chilled or Condenser Water, 4 to 5 HP	5 HP	Rockville High School / Main Building	Boiler Room	Bell & Gossett	CP3331-02 A30	NA	2004		
15	10302303	D3050	Pump	Distribution, HVAC Chilled or Condenser Water, 4 to 5 HP	5 HP	Rockville High School / Main Building	Boiler Room	Bell & Gossett	NA	CP3331-01 A30	2004		
16	10302441	D3050	Pump	Distribution, HVAC Heating Water, 16 to 25 HP		Rockville High School / Main Building	Boiler Room	Bell & Gossett	NA	CP3330-02 A30	2004		
17	10302419	D3050	Pump	Distribution, HVAC Heating Water, 4 to 5 HP	5 HP	Rockville High School / Main Building	Boiler Room	Bell & Gossett	Illegible	CP3328-01 A30	2004		
18	10302301	D3050	Pump [P-2]	Distribution, HVAC Heating Water, 16 to 25 HP	20 HP	Rockville High School / Main Building	Boiler Room	Bell & Gossett	Illegible	Illegible	2004		
19	10302400	D3050	Pump [P-3]	Distribution, HVAC Heating Water, 8 to 10 HP	10 HP	Rockville High School / Main Building	Boiler Room	Bell & Gossett	NA	CP3327-01 B30	2004		
20	10302294	D3050	Pump [P-7]	Distribution, HVAC Heating Water, 16 to 25 HP	20 HP	Rockville High School / Main Building	Boiler Room	Bell & Gossett	Illegible	Illegible	2004		
21	10386966	D3050	Air Handler	Exterior AHU, 8001 to 10000 CFM	9028	Rockville High School / Main Building	Room 2136A	Flexaire Furnaces	SDF-45-G2FH-L	897-254	2004		
22	10429803	D3050	Air Handler [AHU #10]	Interior AHU, Easy/Moderate Access, 30001 to 40000 CFM	20000	Rockville High School / Main Building	Penthouse	Trane	MCCB050UA0A0UB	K03E73147	2004		

Index	ID	UFCODE	Component Description	Attributes	Capacity	Building	Location Detail	Manufacturer	Model	Serial	Dataplate Yr	Barcode	Qty
23	10304621	D3050	Air Handler [AHU-11]	Interior AHU, Easy/Moderate Access, 15001 to 20000 CFM	18225	Rockville High School / Main Building	Room 2116A	Trane	MCCB040N0A000000C0000000000000000000	K03A08654	2004		
24	10304664	D3050	Air Handler [AHU-2]	Interior AHU, Easy/Moderate Access, 25001 to 30000 CFM	29110	Rockville High School / Main Building	Room 2026	Trane	MCCB057N0A000000C0000000000000000000	K03D59843	2004		
25	10304665	D3050	Air Handler [AHU-3]	Interior AHU, Easy/Moderate Access, 30001 to 40000 CFM	20000	Rockville High School / Main Building	Electrical Room 3000	Trane	MCCB050UA0A00DB	K03D59850	2004		
26	10304609	D3050	Air Handler [AHU-5]	Interior AHU, Easy/Moderate Access, 20001 to 25000 CFM	24165	Rockville High School / Main Building	Room 2023	Trane	MCCB050N0A000000C0000000000000000000	K03E60227	2004		
27	10304687	D3050	Air Handler [AHU-6A]	Interior AHU, Easy/Moderate Access, 4001 to 6000 CFM	4444	Rockville High School / Main Building	Room 2074	Trane	MCCB014N0A000000C0000000000000000000	K03A08675	2004		
28	10304651	D3050	Air Handler [AHU-6B]	Interior AHU, Easy/Moderate Access, 4001 to 6000 CFM	4444	Rockville High School / Main Building	Room 2072	Trane	MCCB014JA0A00UA	K03A08688	2004		
29	10304717	D3050	Air Handler [AHU-6C]	Interior AHU, Easy/Moderate Access, 4001 to 6000 CFM	4444	Rockville High School / Main Building	Room 2082	Trane	MCCB014N0A000000C0000000000000000000	K03A08694	2004		
30	10304685	D3050	Air Handler [AHU-7]	Interior AHU, Easy/Moderate Access, 10001 to 15000 CFM	10140	Rockville High School / Main Building	Room 2092	Trane	MCCB021N0A000000C0000000000000000000	K03A08668	2004		
31	10304762	D3050	Air Handler [AHU-8]	Interior AHU, Easy/Moderate Access, 15001 to 20000 CFM	18575	Rockville High School / Main Building	Room 2092	Trane	MCCB040N0A000000C0000000000000000000	K03A08681	2004		
32	10304595	D3050	Air Handler [AHU-9]	Interior AHU, Easy/Moderate Access, 2401 to 4000 CFM	3555	Rockville High School / Main Building	Room 2131	Trane	MCCB017N0A000000C0000000000000000000	K03A09037	2004		
33	10429866	D3050	Air Handler [H&V #3]	Interior AHU, Easy/Moderate Access, 6001 to 8000 CFM	4000	Rockville High School / Main Building	Penthouse	Trane	MCCB010UA0A00UB	K03D59857	2004		

Index	ID	UFCODE	Component Description	Attributes	Capacity	Building	Location Detail	Manufacturer	Model	Serial	Dataplate Yr	Barcode	Qty
34	10429833	D3050	Air Handler [H&V#4]	Interior AHU, Easy/Moderate Access, 1201 to 2400 CFM	2400	Rockville High School / Main Building	Penthouse	Trane	MCCB006UA0A0UA	K03D59862	2004		
35	10304631	D3050	Air Handler [H&V-1A]	Interior AHU, Easy/Moderate Access, 4001 to 6000 CFM	4444	Rockville High School / Main Building	Room 2116A	Trane	MCCB014UA0A0UB	K03A08699	2004		
36	10304612	D3050	Air Handler [H&V-1B]	Interior AHU, Easy/Moderate Access, 4001 to 6000 CFM	4444	Rockville High School / Main Building	Electrical Room 2133A	Trane	MCCB014N0A000000C000000	K03A08704	2004		
37	10304681	D3050	Air Handler [H&V-2]	Interior AHU, Easy/Moderate Access, 4001 to 6000 CFM	4860	Rockville High School / Main Building	Room 2131	Trane	MCCB010N0A000000C00000000 0000000000	K03A08709	2004		
38	10429868	D3060	Exhaust Fan	Centrifugal, 12" Damper	Inaccessible CFM	Rockville High School / Main Building	Penthouse	Loren Cook Company	Inaccessible	Inaccessible	2004		
39	10429809	D3060	Exhaust Fan [EF-13]	Centrifugal, 16" Damper	1725 CFM	Rockville High School / Main Building	Penthouse	Loren Cook Company	120CPV	NA	2004		
40	10429881	D3060	Exhaust Fan [EF-9]	Centrifugal, 12" Damper	908 CFM	Rockville High School / Main Building	Penthouse	Loren Cook Company	225CPV	NA	2004		
41	10429888	D3060	Fan	Centrifugal, 16" Diameter, 1001 to 2000 CFM	1075	Rockville High School / Main Building	Roof	Loren Cook Company	Illegible	NA	2004		
42	10429807	D3060	Fan	Centrifugal, 16" Diameter, 1001 to 2000 CFM	1075	Rockville High School / Main Building	Roof	Loren Cook Company	Illegible	NA	2004		
43	10429854	D3060	Fan	Centrifugal, 16" Diameter, 1001 to 2000 CFM	Illegible	Rockville High School / Main Building	Roof	Loren Cook Company	Illegible	Illegible	2004		
44	10429819	D3060	Fan	Centrifugal, 16" Diameter, 1001 to 2000 CFM	Illegible	Rockville High School / Main Building	Roof	Loren Cook Company	Illegible	Illegible	2004		

Index	ID	UFCode	Component Description	Attributes	Capacity	Building	Location Detail	Manufacturer	Model	Serial	Dataplate Yr	Barcode	Qty
45	10429863	D3060	Fan	Centrifugal, 24" Diameter, 2001 to 5000 CFM		Rockville High School / Main Building	INTAKE	Loren Cook	30x30x8TRE	NA	2004		
46	10429806	D3060	Fan [13]	Centrifugal, 16" Diameter, 1001 to 2000 CFM	Illegible	Rockville High School / Main Building	Roof	Loren Cook Company	Illegible	Illegible	2004		
47	10429808	D3060	Fan [EF-1]	Centrifugal, 16" Diameter, 1001 to 2000 CFM	1725	Rockville High School / Main Building	Roof	Loren Cook Company	135 ACE 135C3B	143S959241-00/0000701	2007		
48	10429828	D3060	Fan [EF-1]	Centrifugal, 16" Diameter, 1001 to 2000 CFM	1229	Rockville High School / Main Building	Roof	Loren Cook Company	180TLC+B	NA	2004		
49	10429877	D3060	Fan [EF-10]	Centrifugal, 12" Diameter, 100 to 1000 CFM	Illegible	Rockville High School / Main Building	Roof	Loren Cook Company	Illegible	Illegible	2004		
50	10429911	D3060	Fan [EF-10]	Centrifugal, 16" Diameter, 1001 to 2000 CFM	1607	Rockville High School / Main Building	Roof	Loren Cook Company	100TLC-B	NA	2004		2
51	10429841	D3060	Fan [EF-12]	Centrifugal, 16" Diameter, 1001 to 2000 CFM	1265	Rockville High School / Main Building	Roof	Loren Cook Company	150TLC-B	NA	2004		
52	10429798	D3060	Fan [EF-15]	Centrifugal, 16" Diameter, 1001 to 2000 CFM	1550	Rockville High School / Main Building	Roof	Loren Cook Company	90TL C150H	NA	2004		
53	10429834	D3060	Fan [EF-16]	Centrifugal, 16" Diameter, 1001 to 2000 CFM	1550	Rockville High School / Main Building	Roof	Loren Cook Company	90TLC15DH	NA	2004		
54	10429858	D3060	Fan [EF-17]	Centrifugal, 16" Diameter, 1001 to 2000 CFM	1490	Rockville High School / Main Building	Roof	Loren Cook Company	120R4B 33	NA	2004		
55	10429869	D3060	Fan [EF-18]	Centrifugal, 16" Diameter, 1001 to 2000 CFM	1490	Rockville High School / Main Building	Roof	Loren Cook Company	120R4B 33	NA	2004		

Index	ID	UFCode	Component Description	Attributes	Capacity	Building	Location Detail	Manufacturer	Model	Serial	Dataplate Yr	Barcode	Qty
56	10429851	D3060	Fan [EF-19]	Centrifugal, 16" Diameter, 1001 to 2000 CFM	1397	Rockville High School / Main Building	Roof	Loren Cook Company	135R6B	NA	2004		
57	10429853	D3060	Fan [EF-2]	Centrifugal, 16" Diameter, 1001 to 2000 CFM	1725	Rockville High School / Main Building	Roof	Loren Cook Company	135 ACE 135C35	143S959241-000/0000702	2007		
58	10429849	D3060	Fan [EF-2]	Centrifugal, 16" Diameter, 1001 to 2000 CFM	1229	Rockville High School / Main Building	Roof	Loren Cook Company	180TLC-B	NA	2004		
59	10429821	D3060	Fan [EF-20]	Centrifugal, 16" Diameter, 1001 to 2000 CFM	1490	Rockville High School / Main Building	Roof	Loren Cook Company	120R4B 33	NA	2004		
60	10429820	D3060	Fan [EF-21]	Centrifugal, 16" Diameter, 1001 to 2000 CFM	1128	Rockville High School / Main Building	Roof	Loren Cook Company	150R5B	NA	2004		
61	10429871	D3060	Fan [EF-22]	Centrifugal, 16" Diameter, 1001 to 2000 CFM	1490	Rockville High School / Main Building	Roof	Loren Cook Company	120R4B 33	NA	2004		
62	10429838	D3060	Fan [EF-23]	Centrifugal, 12" Diameter, 100 to 1000 CFM	Inaccessible	Rockville High School / Main Building	Roof	Loren Cook Company	Inaccessible	Inaccessible	2004		
63	10429817	D3060	Fan [EF-24]	Centrifugal, 16" Diameter, 1001 to 2000 CFM	1550	Rockville High School / Main Building	Roof	Loren Cook Company	90TLC15DH	NA	2004		
64	10429880	D3060	Fan [EF-5]	Centrifugal, 16" Diameter, 1001 to 2000 CFM	1265	Rockville High School / Main Building	Roof	Loren Cook Company	150TLC-B	NA	2004		
65	10429832	D3060	Fan [EF-6]	Centrifugal, 24" Diameter, 2001 to 5000 CFM	431	Rockville High School / Main Building	Roof	Loren Cook Company	300TLC-B	NA	2004		
66	10429870	D3060	Fan [EF-7]	Centrifugal, 16" Diameter, 1001 to 2000 CFM	1258	Rockville High School / Main Building	Penthouse	Loren Cook Company	225CPV	NA	2004		

Index	ID	UFCode	Component Description	Attributes	Capacity	Building	Location Detail	Manufacturer	Model	Serial	Dataplate Yr	Barcode	Qty
67	10429867	D3060	Fan [EF-8]	Centrifugal, 16" Diameter, 1001 to 2000 CFM	1005	Rockville High School / Main Building	Roof	Loren Cook Company	195TLC-B-33	NA	2004		
68	10429887	D3060	Fan [EF-L1C]	Centrifugal, 16" Diameter, 1001 to 2000 CFM	1075	Rockville High School / Main Building	Roof	Loren Cook Company	135RI0D	NA	2004		
69	10429852	D3060	Fan [EF-L1D]	Centrifugal, 16" Diameter, 1001 to 2000 CFM	1075	Rockville High School / Main Building	Roof	Loren Cook Company	165R10D	NA	2004		
70	10429813	D3060	Fan [EF-L1E]	Centrifugal, 16" Diameter, 1001 to 2000 CFM	1075	Rockville High School / Main Building	Roof	Loren Cook Company	165K10D	NA	2004		
71	10429805	D3060	Fan [EF-L1F]	Centrifugal, 16" Diameter, 1001 to 2000 CFM	1075	Rockville High School / Main Building	Roof	Loren Cook Company	165RI0D	NA	2004		
72	10429890	D3060	Fan [EF-L2B]	Centrifugal, 16" Diameter, 1001 to 2000 CFM	1075	Rockville High School / Main Building	Roof	Loren Cook Company	165R10D	NA	2004		
73	10429829	D3060	Fan [EF-L2C]	Centrifugal, 16" Diameter, 1001 to 2000 CFM	1075	Rockville High School / Main Building	Roof	Loren Cook Company	165F100	NA	2004		
74	10429824	D3060	Fan [EF-L2D]	Centrifugal, 16" Diameter, 1001 to 2000 CFM	1075	Rockville High School / Main Building	Roof	Loren Cook Company	135R10D	NA	2004		
75	10429891	D3060	Fan [EF-L2E]	Centrifugal, 16" Diameter, 1001 to 2000 CFM	1075	Rockville High School / Main Building	Roof	Loren Cook Company	165R100	NA	2004		
76	10429843	D3060	Fan [EF-L3A]	Centrifugal, 16" Diameter, 1001 to 2000 CFM	1075	Rockville High School / Main Building	Roof	Loren Cook Company	135R10D	NA	2004		
77	10429839	D3060	Fan [EF-L3B]	Centrifugal, 16" Diameter, 1001 to 2000 CFM	1075	Rockville High School / Main Building	Roof	Loren Cook Company	135RI0D S	NA	2004		

Index	ID	UFCODE	Component Description	Attributes	Capacity	Building	Location Detail	Manufacturer	Model	Serial	Dataplate Yr	Barcode	Qty
78	10429815	D3060	Fan [EF-L3C]	Centrifugal, 16" Diameter, 1001 to 2000 CFM	1075	Rockville High School / Main Building	Roof	Loren Cook Company	165R10D	NA	2004		
79	10429810	D3060	Fan [EF-L3C]	Centrifugal, 16" Diameter, 1001 to 2000 CFM	1075	Rockville High School / Main Building	Roof	Loren Cook Company	165R10D	NA	2004		
80	10429840	D3060	Fan [EF-L3E]	Centrifugal, 16" Diameter, 1001 to 2000 CFM	1075	Rockville High School / Main Building	Roof	Loren Cook Company	135R10D	NA	2004		
81	10429835	D3060	Fan [EF-L4A]	Centrifugal, 16" Diameter, 1001 to 2000 CFM	1075	Rockville High School / Main Building	Roof	Loren Cook Company	135R10D	NA	2004		
82	10429831	D3060	Fan [EF-L5B]	Centrifugal, 16" Diameter, 1001 to 2000 CFM	Illegible	Rockville High School / Main Building	Roof	Loren Cook Company	Illegible	Illegible	2004		
83	10429865	D3060	Fan [EF-L5C]	Centrifugal, 16" Diameter, 1001 to 2000 CFM	1075	Rockville High School / Main Building	Roof	Loren Cook Company	Illegible	NA	2004		
84	10429855	D3060	Fan [EF-L5D]	Centrifugal, 16" Diameter, 1001 to 2000 CFM	1075	Rockville High School / Main Building	Roof	Loren Cook Company	135R10D	NA	2004		
85	10429883	D3060	Fan [EF-L5E]	Centrifugal, 16" Diameter, 1001 to 2000 CFM	1075	Rockville High School / Main Building	Roof	Loren Cook Company	135P10D	NA	2004		
86	10429864	D3060	Fan [EF-L6A]	Centrifugal, 16" Diameter, 1001 to 2000 CFM	1075	Rockville High School / Main Building	Roof	Loren Cook Company	16510D	NA	2004		
87	10429800	D3060	Fan [EF-L6B]	Centrifugal, 16" Diameter, 1001 to 2000 CFM	Illegible	Rockville High School / Main Building	Roof	Loren Cook Company	Illegible	Illegible	2004		
88	10429801	D3060	Fan [EF-L6C]	Centrifugal, 16" Diameter, 1001 to 2000 CFM	1075	Rockville High School / Main Building	Roof	Loren Cook Company	165R10D	NA	2004		

Index	ID	UFCODE	Component Description	Attributes	Capacity	Building	Location Detail	Manufacturer	Model	Serial	Dataplate Yr	Barcode	Qty
89	10429872	D3060	Fan [EF-L6D]	Centrifugal, 16" Diameter, 1001 to 2000 CFM	1075	Rockville High School / Main Building	Roof	Loren Cook Company	13510D	NA	2004		
90	10429892	D3060	Fan [EF-L6E]	Centrifugal, 16" Diameter, 1001 to 2000 CFM	1075	Rockville High School / Main Building	Roof	Loren Cook Company	165R10D	NA	2004		
91	10429846	D3060	Fan [F-01]	Centrifugal, 16" Diameter, 1001 to 2000 CFM	1075	Rockville High School / Main Building	Roof	Greenheck	GB-260-10-X	04F14419	2004		
92	10429874	D3060	Fan [F-03]	Centrifugal, 12" Diameter, 100 to 1000 CFM	500	Rockville High School / Main Building	Roof	Greenheck	GB-160-4X-QD	94105029	2004		
93	10429850	D3060	Fan [F-04]	Centrifugal, 12" Diameter, 100 to 1000 CFM	500	Rockville High School / Main Building	Roof	Greenheck	GB-80-4-X	94K00831	2004		
94	10429818	D3060	Fan [F-05]	Centrifugal, 12" Diameter, 100 to 1000 CFM	500	Rockville High School / Main Building	Roof	Greenheck	GB-70-4-X	94K00782	2004		
95	10429812	D3060	Fan [F-06]	Centrifugal, 12" Diameter, 100 to 1000 CFM	500	Rockville High School / Main Building	Roof	Greenheck	GB-081-6-X	04 F14477	2004		
96	10429827	D3060	Fan [RF-1]	Centrifugal, 12" Diameter, 100 to 1000 CFM	561	Rockville High School / Main Building	Roof	Loren Cook Company	365TLC-B	NA	2004		
97	10429861	D3060	Fan [RF-11]	Centrifugal, 24" Diameter, 2001 to 5000 CFM	561	Rockville High School / Main Building	Roof	Loren Cook Company	365TLC-B	NA	2004		
98	10429878	D3060	Fan [RF-2]	Centrifugal, 12" Diameter, 100 to 1000 CFM	561	Rockville High School / Main Building	Roof	Loren Cook Company	365TLC-B	NA	2004		
99	10429842	D3060	Fan [RF-3]	Centrifugal, 12" Diameter, 100 to 1000 CFM	561	Rockville High School / Main Building	Roof	Loren Cook Company	365TLC-B	NA	2004		

Index	ID	UFCODE	Component Description	Attributes	Capacity	Building	Location Detail	Manufacturer	Model	Serial	Dataplate Yr	Barcode	Qty
100	10429876	D3060	Fan [RF-4]	Centrifugal, 12" Diameter, 100 to 1000 CFM	561	Rockville High School / Main Building	Roof	Loren Cook Company	365TLC-B	NA	2004		
101	10429879	D3060	Fan [RF-5]	Centrifugal, 12" Diameter, 100 to 1000 CFM	561	Rockville High School / Main Building	Roof	Loren Cook Company	365 TLC-B	NA	2004		
102	10429799	D3060	Fan [RF-6A]	Centrifugal, 12" Diameter, 100 to 1000 CFM	431	Rockville High School / Main Building	Roof	Loren Cook Company	300TLC-B	NA	2004		
103	10429802	D3060	Fan [RF-6B]	Centrifugal, 12" Diameter, 100 to 1000 CFM	431	Rockville High School / Main Building	Roof	Loren Cook Company	300TLC-B	NA	2004		
104	10429884	D3060	Fan [RF-6C]	Centrifugal, 12" Diameter, 100 to 1000 CFM	525	Rockville High School / Main Building	Roof	Loren Cook Company	210TLC-B	NA	2004		
105	10429845	D3060	Fan [RF-6D]	Centrifugal, 12" Diameter, 100 to 1000 CFM	525	Rockville High School / Main Building	Roof	Loren Cook Company	210TLC-B	NA	2004		
106	10429830	D3060	Fan [RF-7]	Centrifugal, 16" Diameter, 1001 to 2000 CFM	1075	Rockville High School / Main Building	Roof	Loren Cook Company	Inaccessible	Inaccessible	2004		
107	10429856	D3060	Fan [RF-8]	Centrifugal, 12" Diameter, 100 to 1000 CFM	561	Rockville High School / Main Building	Roof	Loren Cook Company	365TLC-B	NA	2004		
108	10429823	D3060	Fan [RF-9]	Centrifugal, 12" Diameter, 100 to 1000 CFM	431	Rockville High School / Main Building	Roof	Loren Cook Company	300TLC-B	NA	2004		
109	10429885	D3060	Fan [RF-HV1A]	Centrifugal, 24" Diameter, 2001 to 5000 CFM	525	Rockville High School / Main Building	Roof	Loren Cook Company	210TLC-B	NA	2004		
110	10429859	D3060	Fan [RF-HV1B]	Centrifugal, 16" Diameter, 1001 to 2000 CFM	1725	Rockville High School / Main Building	Roof	Loren Cook Company	210TLC-B	NA	2004		

Index	ID	UFCODE	Component Description	Attributes	Capacity	Building	Location Detail	Manufacturer	Model	Serial	Dataplate Yr	Barcode	Qty
111	10429844	D3060	Fan [RF-HV2A]	Centrifugal, 24" Diameter, 2001 to 5000 CFM	431	Rockville High School / Main Building	Roof	Loren Cook Company	300TLC-B	NA	2004		
112	10429826	D3060	Fan [RF-HV2-B]	Centrifugal, 12" Diameter, 100 to 1000 CFM	431	Rockville High School / Main Building	Roof	Loren Cook Company	300TLC-B	NA	2004		

Index	ID	UFCODE	Component Description	Attributes	Capacity	Building	Location Detail	Manufacturer	Model	Serial	Dataplate Yr	Barcode	Qty
D40 Fire Protection													
1	10302302	D4010	Backflow Preventer	Fire Suppression	6 IN	Rockville High School / Main Building	Basement				2004		

Index	ID	UFCode	Component Description	Attributes	Capacity	Building	Location Detail	Manufacturer	Model	Serial	Dataplate Yr	Barcode	Qty
D50 Electrical													
1	10304546	D5010	Generator	Gas or Gasoline	85 - 100 KW	Rockville High School / Main Building	Building Exterior	Kohler	250RZD	0770282	2004		
2	10429889	D5010	Solar Power	Photovoltaic (PV) Panel, 24 SF		Rockville High School / Main Building	Roof				2007		962
3	10429848	D5010	Solar Power [1]	Inverter, 2.0 KW		Rockville High School / Main Building	Roof	Solar Edge	SE120KUS	SJ3022-07E052FDF-91	2007		
4	10429875	D5010	Solar Power [2]	Inverter, 2.0 KW		Rockville High School / Main Building	Roof	Solar Edge	SE80KUS	SJ2422-07E0518CA - 65	2007		
5	10429816	D5010	Solar Power [3]	Inverter, 2.0 KW		Rockville High School / Main Building	Roof	Solar Edge	SE80KUS	SV1723-07E1BB86E-C2	2007		
6	10302341	D5010	Automatic Transfer Switch	ATS	100 AMP	Rockville High School / Main Building	Boiler Room	Asco	7000 SERIES	Inaccessible	2004		
7	10304790	D5020	Secondary Transformer	Dry, Stepdown	15 KVA	Rockville High School / Main Building	Electrical Room 2116A				2004		
8	10304745	D5020	Secondary Transformer	Dry, Stepdown	112.5 KVA	Rockville High School / Main Building	Electrical Room 2116A	GE	NA	NA	2004		
9	10304776	D5020	Secondary Transformer	Dry, Stepdown	75 KVA	Rockville High School / Main Building	Electrical Room 2092	Powersmiths	Esaver-80R-75-480-208	NA	2025		
10	10304739	D5020	Secondary Transformer	Dry, Stepdown	15 KVA	Rockville High School / Main Building	Electrical Room 2023	Powersmiths	Esaver-80R-15-480-208	NA	2025		
11	10304629	D5020	Secondary Transformer	Dry, Stepdown	112.5 KVA	Rockville High School / Main Building	Electrical Room 2023	Powersmiths	Esaver-80R-112.5-480-208-T115	NA	2025		

Index	ID	UFCode	Component Description	Attributes	Capacity	Building	Location Detail	Manufacturer	Model	Serial	Dataplate Yr	Barcode	Qty
12	10304783	D5020	Secondary Transformer	Dry, Stepdown	45 KVA	Rockville High School / Main Building	Electrical Room 2116A	GE	NA	NA	2004		
13	10304636	D5020	Secondary Transformer	Dry, Stepdown	75 KVA	Rockville High School / Main Building	Electrical Room 2023	Powersmiths	Inaccessible	NA	2025		
14	10304692	D5020	Secondary Transformer	Dry, Stepdown	15 KVA	Rockville High School / Main Building	Electrical Room 2092	Powersmiths	Esaver-80R-15-480-208	NA	2025		
15	10304659	D5020	Secondary Transformer	Dry, Stepdown	112.5 KVA	Rockville High School / Main Building	Electrical Room 2092	Powersmiths	Esaver-80R-112.5-480-208-T115	NA	2025		
16	10302381	D5020	Secondary Transformer	Dry, Stepdown, 300 KVA		Rockville High School / Main Building	Boiler Room	Powersmiths	Esaver-80R-300-480-208	80143	2024		
17	10302317	D5020	Secondary Transformer	Dry, Stepdown, 45 KVA	45 KVA	Rockville High School / Main Building	Boiler Room	PowerSmiths	Esaver-80R-45-480-208	80133	2004		
18	10304630	D5020	Secondary Transformer [T-2B]	Dry, Stepdown	150 KVA	Rockville High School / Main Building	Electrical Room 2026	GE	NA	NA	2004		
19	10304615	D5020	Secondary Transformer [T-2ELB]	Dry, Stepdown	15 KVA	Rockville High School / Main Building	Electrical Room 2026	GE	NA	NA	2004		
20	10304754	D5020	Secondary Transformer [T-K2PN]	Dry, Stepdown	112.5 KVA	Rockville High School / Main Building	Electrical Room 2026	GE	NA	NA	2004		
21	10304643	D5020	Secondary Transformer [T-K3PN]	Dry, Stepdown	30 KVA	Rockville High School / Main Building	Electrical Room 3000	GE	NA	NA	2004		
22	10304541	D5020	Secondary Transformer [T-KEX]	Dry, Stepdown	15 KVA	Rockville High School / Site	Stadium Snack Bar	GE	NA	NA	2004		
23	10304547	D5020	Secondary Transformer [T-OC]	Dry, Stepdown	112.5 KVA	Rockville High School / Site	Stadium Snack Bar	GE	NA	NA	2004		

Index	ID	UFCODE	Component Description	Attributes	Capacity	Building	Location Detail	Manufacturer	Model	Serial	Dataplate Yr	Barcode	Qty
24	10302353	D5020	Switchboard	277/480 V, 600 AMP	600 AMPS	Rockville High School / Main Building	Boiler Room	General Electric	0825X0080L01	338B6610	2004		
25	10302351	D5020	Switchboard	277/480 V, 600 AMP	600 AMP	Rockville High School / Main Building	Boiler Room	General Electric	72290548R	178PP72594	2004		
26	10302358	D5020	Switchboard [1K]	120/208 V, 600 AMP	600 AMP	Rockville High School / Main Building	1055B - Commercial Kitchen	General Electric	722905483	178PP99204	2004		
27	10304602	D5020	Switchboard [2MDPS]	277/480 V	600 AMP	Rockville High School / Main Building	Electrical Room 2092	GE	NA	NA	2004		
28	10304773	D5020	Switchboard [3LDPB]	120/208 V	800 AMP	Rockville High School / Main Building	Electrical Room 3000	GE	NA	NA	2004		
29	10302338	D5020	Switchboard [EM]	277/480 V, 600 AMP	600 AMP	Rockville High School / Main Building	Boiler Room	General Electric	72290548R	178PP72594	2004		
30	10302386	D5020	Switchboard [TLP1]	120/208 V, 800 AMP	800 AMPS	Rockville High School / Main Building	Boiler Room	General Electric	72290548D6	178PP96964			
31	10302412	D5020	Switchboard [TWP1]	120/208 V, 1200 AMP	1200 AMP	Rockville High School / Main Building	Boiler Room	General Electric	72290548D9	178PP99524			
32	10302401	D5020	Switchgear	277/480 V, 4000 AMP	4000 AMP	Rockville High School / Main Building	Boiler Room	General Electric	ME3398	8240946D01	2004		
33	10302329	D5020	Distribution Panel	277/480 V, 1200 AMP	1200 AMP	Rockville High School / Main Building	Boiler Room	General Electric	72290548D9	178PP99524			
34	10302385	D5020	Distribution Panel [1K]	120/208 V, 600 AMP	600 AMPS	Rockville High School / Main Building	1055B - Commercial Kitchen	General Electric	722905483	178PP99204	2004		

Index	ID	UFCode	Component Description	Attributes	Capacity	Building	Location Detail	Manufacturer	Model	Serial	Dataplate Yr	Barcode	Qty
35	10304727	D5020	Distribution Panel [2LDPC]	120/208 V	400 AMP	Rockville High School / Main Building	Electrical Room 2023	GE	NA	NA	2004		
36	10304728	D5020	Distribution Panel [2LDPD]	120/240 V	400 AMP	Rockville High School / Main Building	Electrical Room 2116A	GE	NA	NA	2004		
37	10304691	D5020	Distribution Panel [2LDPD]	120/240 V	400 AMP	Rockville High School / Main Building	Electrical Room 2116A	GE	NA	NA	2004		
38	10304796	D5020	Distribution Panel [2LPA]	120/208 V	400 AMP	Rockville High School / Main Building	Electrical Room 2092	GE	NA	NA	2004		
39	10304623	D5020	Distribution Panel [2LPA]	120/208 V	400 AMP	Rockville High School / Main Building	Electrical Room 2092	GE	NA	NA	2004		
40	10304748	D5020	Distribution Panel [2LPB]	120/208 V	400 AMP	Rockville High School / Main Building	Electrical Room 2026	GE	NA	NA	2004		
41	10304736	D5020	Distribution Panel [2LPB]	120/208 V	400 AMP	Rockville High School / Main Building	Electrical Room 2026	GE	NA	NA	2004		
42	10304793	D5020	Distribution Panel [2MDPN]	277/480 V	600 AMP	Rockville High School / Main Building	Electrical Room 2026	GE	NA	NA	2004		
43	10304787	D5020	Distribution Panel [2MDPR]	277/480 V	400 AMP	Rockville High School / Main Building	Electrical Room 2023	GE	NA	NA	2004		
44	10304719	D5020	Distribution Panel [2MDPW]	277/480 V	600 AMP	Rockville High School / Main Building	Electrical Room 2116A	GE	NA	NA	2004		
45	10304697	D5020	Distribution Panel [2MDPW]	277/480 V	600 AMP	Rockville High School / Main Building	Electrical Room 2116A	GE	NA	NA	2004		

Index	ID	UFCode	Component Description	Attributes	Capacity	Building	Location Detail	Manufacturer	Model	Serial	Dataplate Yr	Barcode	Qty
46	10304650	D5020	Distribution Panel [3MDPM SEC A]	277/480 V	800 AMP	Rockville High School / Main Building	Electrical Room 3000	GE	NA	NA	2004		
47	10304628	D5020	Distribution Panel [FL]	120/208 V	400 AMP	Rockville High School / Main Building	3012 Food Science	GE	NA	NA	2004		
48	10304647	D5020	Distribution Panel [FL]	120/208 V	400 AMP	Rockville High School / Main Building	3012 Food Science				2004		
49	10302328	D5020	Distribution Panel [FL]	120/208 V, 400 AMP	400 AMP	Rockville High School / Main Building	3012	General Electric	AQF3424MBXAXB7P2	18RDD2028B			
50	10302319	D5020	Distribution Panel [FL]	120/240 V, 400 AMP		Rockville High School / Main Building	3012	General Electric	AQF3424CTX	162DD2028B	2004		
51	10304694	D5020	Distribution Panel [K2PN]	120/208 V	400 AMP	Rockville High School / Main Building	Electrical Room 2026	GE	NA	NA	2004		
52	10304704	D5020	Distribution Panel [K2PN]	120/208 V	400 AMP	Rockville High School / Main Building	Electrical Room 2026	GE	NA	NA	2004		
53	10304749	D5020	Distribution Panel [K3PN]	120/208 V	400 AMP	Rockville High School / Main Building	Electrical Room 3000	GE	NA	NA	2004		
54	10304788	D5020	Distribution Panel [K3PN]	120/208 V	400 AMP	Rockville High School / Main Building	Electrical Room 3000	GE	NA	NA	2004		
55	10304536	D5020	Distribution Panel [OC]	120/208 V	400 AMP	Rockville High School / Site	Stadium Snack Bar	GE	NA	NA	2004		
56	10304582	D5020	Distribution Panel [OC]	120/208 V	400 AMP	Rockville High School / Site	Stadium Snack Bar	GE	NA	NA	2004		
57	10304533	D5020	Distribution Panel [SLS]	277/480 V	400 AMP	Rockville High School / Site	Stadium Snack Bar				2004		

Index	ID	UFCode	Component Description	Attributes	Capacity	Building	Location Detail	Manufacturer	Model	Serial	Dataplate Yr	Barcode	Qty
58	10304734	D5040	High Intensity Discharge (HID) Fixtures	Metal Halide, Gymnasium Lighting, 400 W		Rockville High School / Main Building	2nd Floor Gymnasium						24

Index	ID	UFCode	Component Description	Attributes	Capacity	Building	Location Detail	Manufacturer	Model	Serial	Dataplate Yr	Barcode	Qty
D70 Electronic Safety & Security													
1	10302414	D7050	Fire Alarm Panel	Fully Addressable		Rockville High School / Main Building	Boiler Room	Simplex	4100-2103	742-456	2004		

Index	ID	UFCode	Component Description	Attributes	Capacity	Building	Location Detail	Manufacturer	Model	Serial	Dataplate Yr	Barcode	Qty
E10 Equipment													
1	10302404	E1030	Foodservice Equipment	Commercial Kitchen, 3-Bowl		Rockville High School / Main Building	1055B - Commercial Kitchen				2004		
2	10302423	E1030	Foodservice Equipment	Convection Oven, Double		Rockville High School / Main Building	1055B - Commercial Kitchen	Blodgett	NA	050404RA013T			
3	10302372	E1030	Foodservice Equipment	Convection Oven, Double		Rockville High School / Main Building	1055B - Commercial Kitchen	Blodgett	NA	050404PA012T			
4	10302293	E1030	Foodservice Equipment	Exhaust Hood, 8 to 10 LF		Rockville High School / Main Building	1055B - Commercial Kitchen	Garland Commercial Ranges	CM-EXII-B-X-DMA	U03-016.28M	2004		
5	10302306	E1030	Foodservice Equipment	Exhaust Hood, 8 to 10 LF		Rockville High School / Main Building	1055B - Commercial Kitchen	VENT MASTER	H-CM-B-X-DMA	U03-016.28L	2004		
6	10302447	E1030	Foodservice Equipment	Exhaust Hood, 8 to 10 LF		Rockville High School / Main Building	1055B - Commercial Kitchen	VENTMASTER	CM-EXII-B-X-DMA	U03-016.28R	2004		
7	10302446	E1030	Foodservice Equipment	Food Warmer, Proofing Cabinet on Wheels		Rockville High School / Main Building	1055B - Commercial Kitchen	Traulsen	NA	NA	2004		
8	10302408	E1030	Foodservice Equipment	Food Warmer, Proofing Cabinet on Wheels		Rockville High School / Main Building	3012	Empura	XB27F-HC	203645033	2004		
9	10302327	E1030	Foodservice Equipment	Food Warmer, Proofing Cabinet on Wheels		Rockville High School / Main Building	1055B - Commercial Kitchen	Vulcan	VHFA18-1	52-1007781			
10	10302291	E1030	Foodservice Equipment	Food Warmer, Proofing Cabinet on Wheels		Rockville High School / Main Building	1055B - Commercial Kitchen	Traulsen					
11	10302369	E1030	Foodservice Equipment	Food Warmer, Proofing Cabinet on Wheels		Rockville High School / Main Building	1055B - Commercial Kitchen	Traulsen	No dataplate	No dataplate			

Index	ID	UFCODE	Component Description	Attributes	Capacity	Building	Location Detail	Manufacturer	Model	Serial	Dataplate Yr	Barcode	Qty
12	10302405	E1030	Foodservice Equipment	Icemaker, Freestanding		Rockville High School / Main Building	1055B - Commercial Kitchen	Koolaire	KDT0400W-161	1120948953	2022		
13	10302366	E1030	Foodservice Equipment	Range, 2-Burner		Rockville High School / Main Building	1055B - Commercial Kitchen	GARLAND	Inaccessible	Inaccessible	2004		
14	10304634	E1030	Foodservice Equipment	Refrigerator, 1-Door Reach-In		Rockville High School / Main Building	3012 Food Science	Cooler Depot	GDC-14	NA	2010		
15	10302416	E1030	Foodservice Equipment	Refrigerator, 1-Door Reach-In		Rockville High School / Main Building	1055B - Commercial Kitchen	Traulsen	RH132WP-X0042	T73389G04	2004		
16	10304653	E1030	Foodservice Equipment	Refrigerator, 1-Door Reach-In		Rockville High School / Main Building	3012 Food Science	Cooler Depot	XB27F-HC	203645033	2020		
17	10302323	E1030	Foodservice Equipment	Refrigerator, 1-Door Reach-In		Rockville High School / Main Building	1055B - Commercial Kitchen	Traulsen	RH132WP-X0041	T73387G04			
18	10302387	E1030	Foodservice Equipment	Refrigerator, 1-Door Reach-In		Rockville High School / Main Building	1055B - Commercial Kitchen	Traulsen	RH132WP-X0041	T73388G04			
19	10302397	E1030	Foodservice Equipment	Refrigerator, 1-Door Reach-In		Rockville High School / Main Building	1055B - Commercial Kitchen	Traulsen	G14312P	25C01054	2024		
20	10302336	E1030	Foodservice Equipment	Refrigerator, 1-Door Reach-In		Rockville High School / Main Building	1055B - Commercial Kitchen	Traulsen	RH132WP-X0040	T73386G04	2004		
21	10304708	E1030	Foodservice Equipment	Refrigerator, 1-Door Reach-In		Rockville High School / Main Building	3012 Food Science	Cooler Depot	GDC-14	NA	2010		
22	10302454	E1030	Foodservice Equipment	Refrigerator, 2-Door Reach-In		Rockville High School / Main Building	3012	Empura	XB54R-HC	636078598	2004		

Index	ID	UFCODE	Component Description	Attributes	Capacity	Building	Location Detail	Manufacturer	Model	Serial	Dataplate Yr	Barcode	Qty
23	10304639	E1030	Foodservice Equipment	Refrigerator, 2-Door Reach-In		Rockville High School / Main Building	3012 Food Science	Cooler Depot	XB54R-HC	636078598			
24	10302287	E1030	Foodservice Equipment	Sink, 1-Bowl		Rockville High School / Main Building	1055B - Commercial Kitchen				2004		
25	10302359	E1030	Foodservice Equipment	Sink, 1-Bowl		Rockville High School / Main Building	1055B - Commercial Kitchen				2004		
26	10302335	E1030	Foodservice Equipment	Sink, 1-Bowl		Rockville High School / Main Building	1055B - Commercial Kitchen				2004		
27	10302417	E1030	Foodservice Equipment	Sink, 1-Bowl		Rockville High School / Main Building	1055B - Commercial Kitchen				2004		
28	10302428	E1030	Foodservice Equipment	Sink, 2-Bowl		Rockville High School / Main Building	1055B - Commercial Kitchen				2004		
29	10302421	E1030	Foodservice Equipment	Steamer, Freestanding		Rockville High School / Main Building	1055B - Commercial Kitchen	LANG MANUFACTURING	LCG-141M	03821368002			
30	10302304	E1030	Foodservice Equipment	Steamer, Freestanding		Rockville High School / Main Building	1055B - Commercial Kitchen	Winston Industries	HA4022GE	20040305-004	2004		
31	10302440	E1030	Foodservice Equipment	Trash Compactor, 600 LB		Rockville High School / Main Building	1076 - Auditorium	No dataplate	No dataplate	No dataplate	2004		
32	10429862	E1030	Foodservice Equipment	Walk-In, Condenser for Refigerator/Freezer		Rockville High School / Main Building	Commercial Kitchen	Cold Zone	0R-D300L44-2T	C04203963-1301	2004		
33	10429804	E1030	Foodservice Equipment	Walk-In, Condenser for Refigerator/Freezer		Rockville High School / Main Building	Commercial Kitchen	Cold Zone	0R-S125M44-2T	C04203963-1701	2004		

Index	ID	UFCode	Component Description	Attributes	Capacity	Building	Location Detail	Manufacturer	Model	Serial	Dataplate Yr	Barcode	Qty
34	10302380	E1030	Foodservice Equipment	Walk-In, Evaporator for Refrigerator/Freezer		Rockville High School / Main Building	1055B - Commercial Kitchen (Freezer)	ColdZone	AE46-185B	C04203963-1601	2004		
35	10302362	E1030	Foodservice Equipment	Walk-In, Evaporator for Refrigerator/Freezer		Rockville High School / Main Building	1055B - Commercial Kitchen (Refrigerator)	ColdZone	AA28-122B	C04203963-1801	2004		
36	10302340	E1030	Foodservice Equipment	Walk-In, Freezer		Rockville High School / Main Building	1055B - Commercial Kitchen	Thermo-Kool	No dataplate	No dataplate	2004		
37	10302360	E1030	Foodservice Equipment	Walk-In, Refrigerator		Rockville High School / Main Building	1055B - Commercial Kitchen (Refrigerator)	Thermo-Kool	No dataplate	No dataplate	2004		
38	10302396	E1040	Ceramics Equipment	Kiln		Rockville High School / Main Building	1095C - Art Storage	LL Kilns	JD230	072905	2004		
39	10302356	E1040	Ceramics Equipment	Kiln		Rockville High School / Main Building	1095C - Art Storage	LL KILNS	JD230	060304-G	2004		
40	10302332	E1040	Ceramics Equipment	Kiln		Rockville High School / Main Building	1095C - Art Storage	LL KILNS	JD230	060304-E			
41	10304594	E1040	Laboratory Equipment	Exhaust Hood, Variable Volume 4 LF	4 LF	Rockville High School / Main Building	Science Prep						5
42	10304733	E1040	Laboratory Equipment	Exhaust Hood, Variable Volume 4 LF	4 LF	Rockville High School / Main Building	Classrooms Science						9

Index	ID	UFCode	Component Description	Attributes	Capacity	Building	Location Detail	Manufacturer	Model	Serial	Dataplate Yr	Barcode	Qty
G20 OTHER													
1	10302288	G2080	Irrigation System	Control Panel		Rockville High School / Main Building	Boiler room				2004		